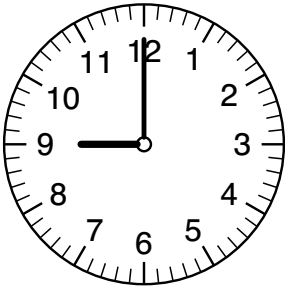


Eine Uhr hat 2 oder 3 Zeiger.

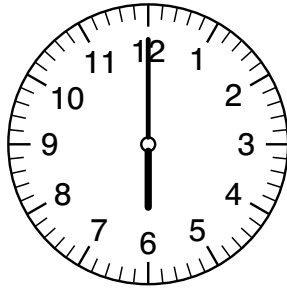
Der kleine, dicke Zeiger zeigt die Stunden an.

Der große, dünne Zeiger zeigt die Minuten an.

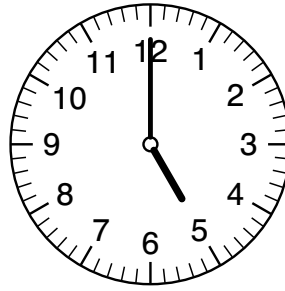
Manchmal gibt es auch noch einen ganz dünnen Sekundenzeiger.



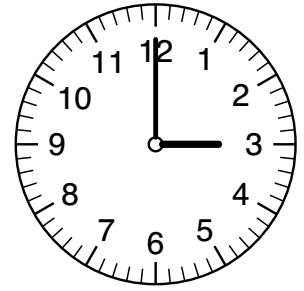
_____ Uhr



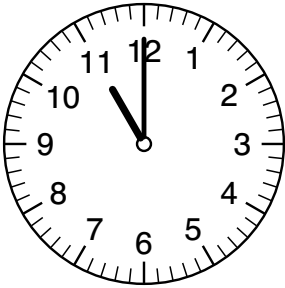
_____ Uhr



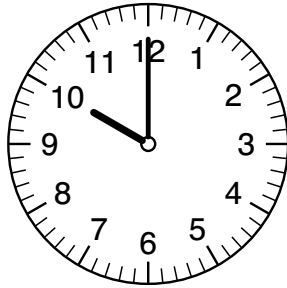
_____ Uhr



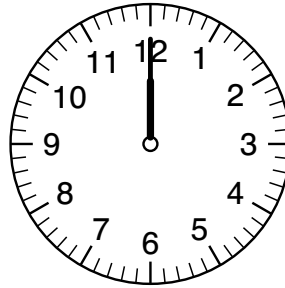
_____ Uhr



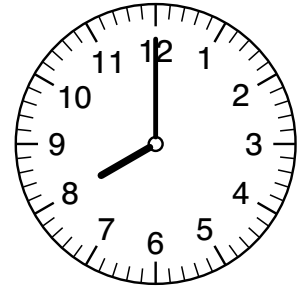
_____ Uhr



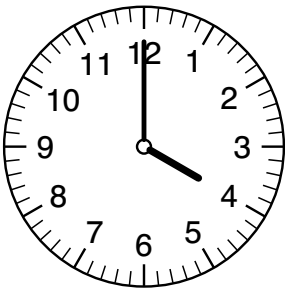
_____ Uhr



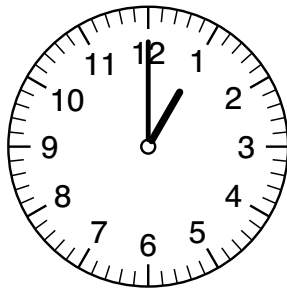
_____ Uhr



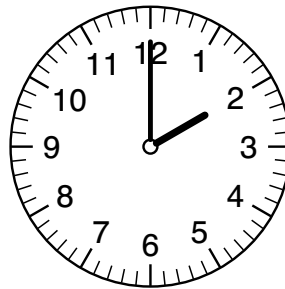
_____ Uhr



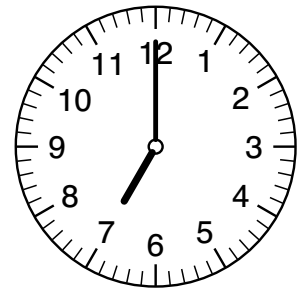
_____ Uhr



_____ Uhr



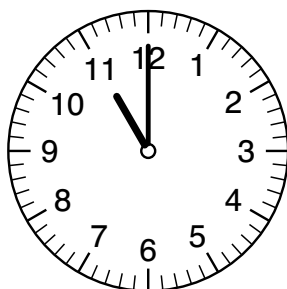
_____ Uhr



_____ Uhr

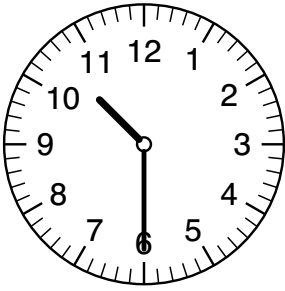
Wenn der große Zeiger auf 12 steht, ist es genau ... Uhr.

Der kleine Zeiger zeigt uns an, welche Stunde gerade ist.

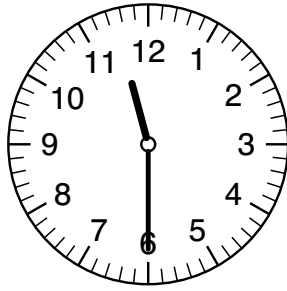


11 Uhr

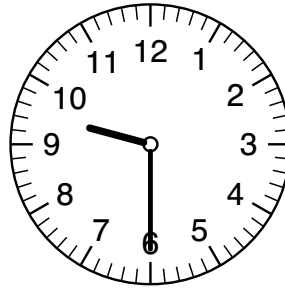
11:00 Uhr



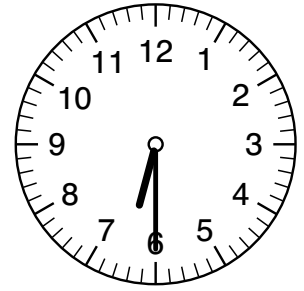
_____ Uhr



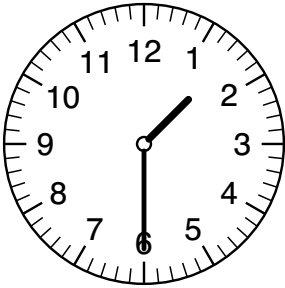
_____ Uhr



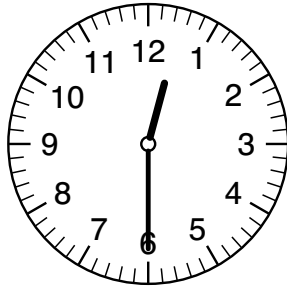
_____ Uhr



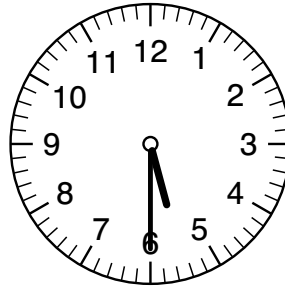
_____ Uhr



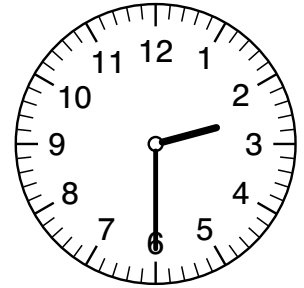
_____ Uhr



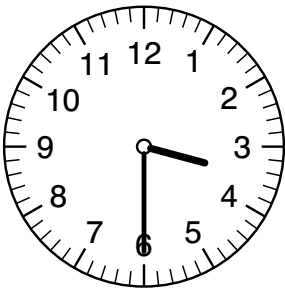
_____ Uhr



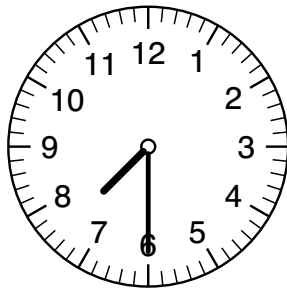
_____ Uhr



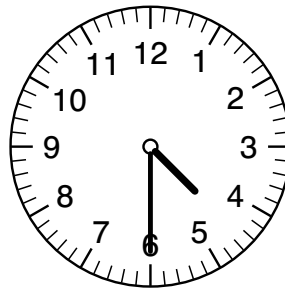
_____ Uhr



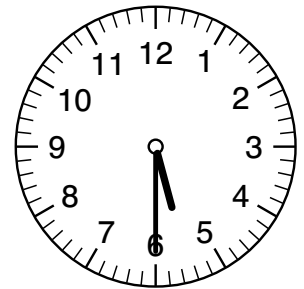
_____ Uhr



_____ Uhr



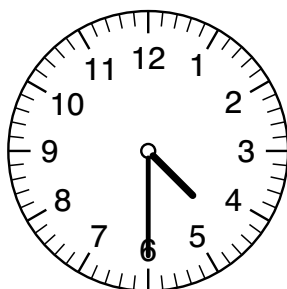
_____ Uhr



_____ Uhr

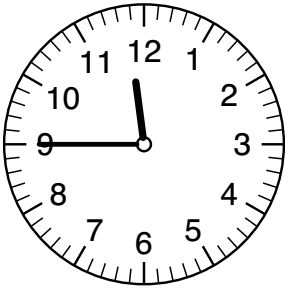
Wenn der große Zeiger auf 6 steht, ist es die halbe Stunde erreicht

Der kleine Zeiger zeigt uns an, zu welcher Stunde er als nächstes kommt oder was gerade vorbei ist.

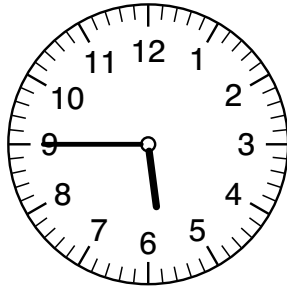


halb 5

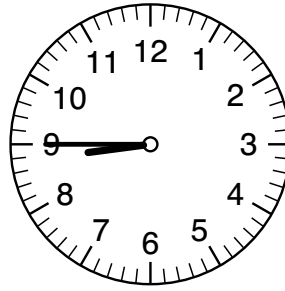
4:30 Uhr



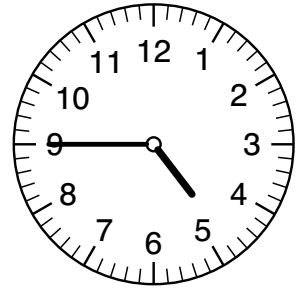
_____ Uhr



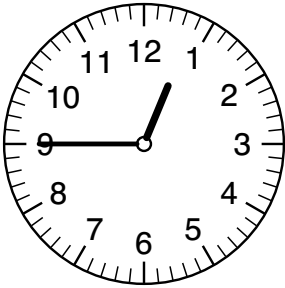
_____ Uhr



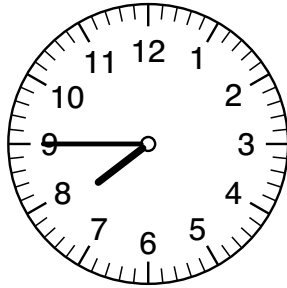
_____ Uhr



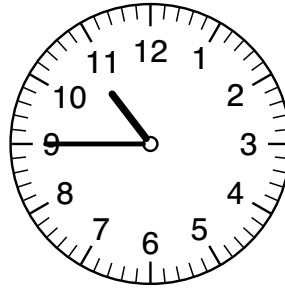
_____ Uhr



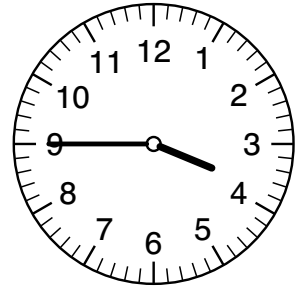
_____ Uhr



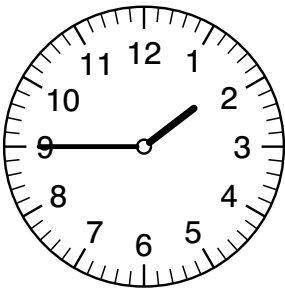
_____ Uhr



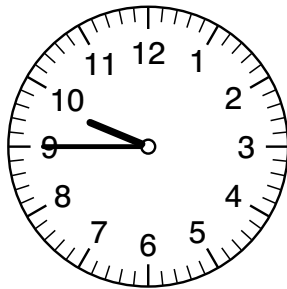
_____ Uhr



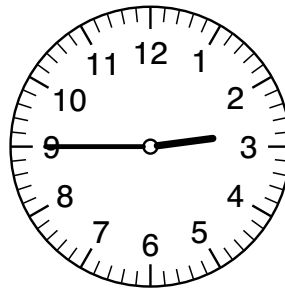
_____ Uhr



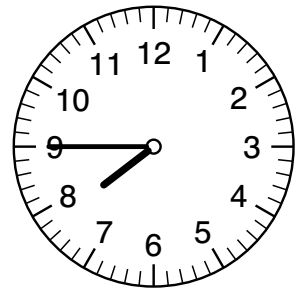
_____ Uhr



_____ Uhr



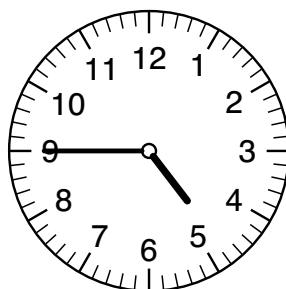
_____ Uhr



_____ Uhr

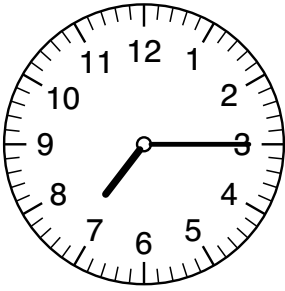
Wenn der große Zeiger auf 9 steht, ist es viertel vor der Stunde.

Der kleine Zeiger zeigt uns an, zu welcher Stunde er als nächstes kommt.

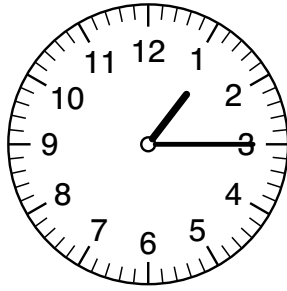


viertel vor 5

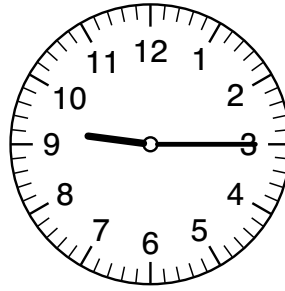
4:45 Uhr



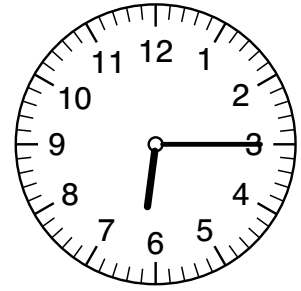
_____ Uhr



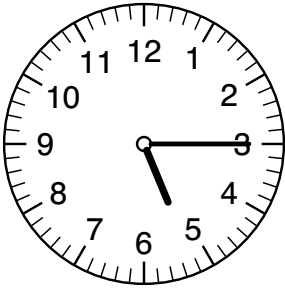
_____ Uhr



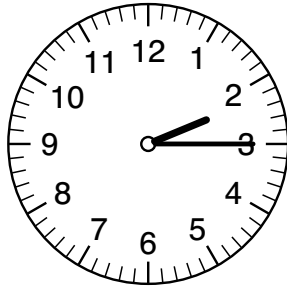
_____ Uhr



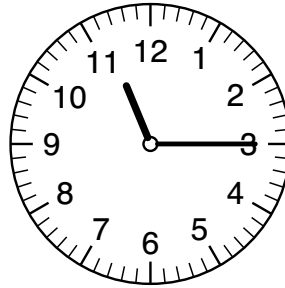
_____ Uhr



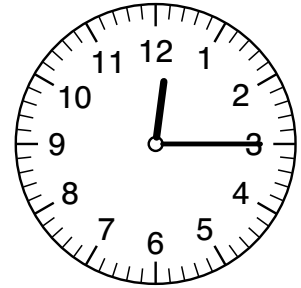
_____ Uhr



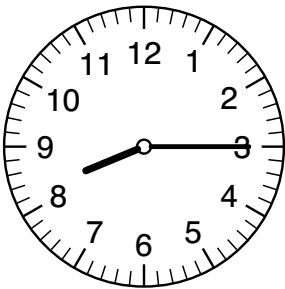
_____ Uhr



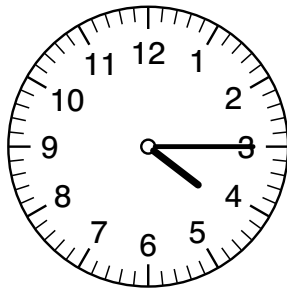
_____ Uhr



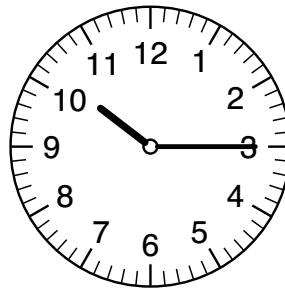
_____ Uhr



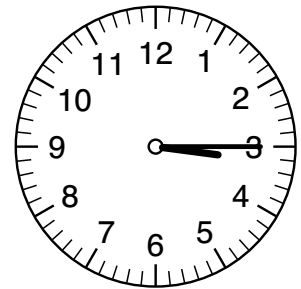
_____ Uhr



_____ Uhr



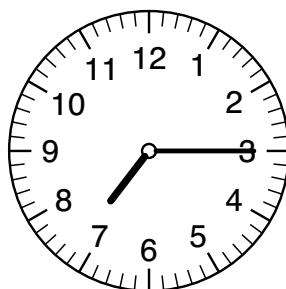
_____ Uhr



_____ Uhr

Wenn der große Zeiger auf 3 steht, ist es viertel nach der Stunde.

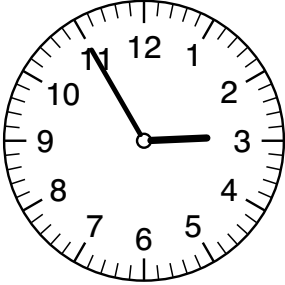
Der kleine Zeiger zeigt uns an, welche Stunde gerade vorbei ist.



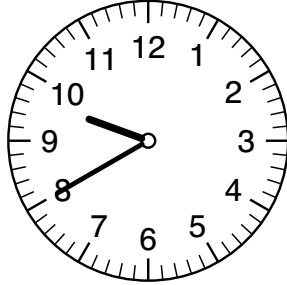
viertel nach 7

7:15 Uhr

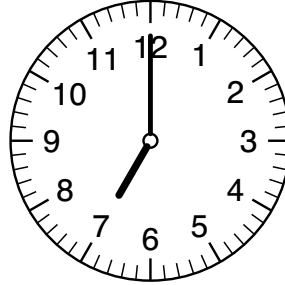
Der große Zeiger zeigt die Stunde an.
 Der kleine Zeiger zeigt die Minuten an.
 Bei den Minuten hilft dir auch die Beschriftung der
 großen Uhr auf der ersten Seite!



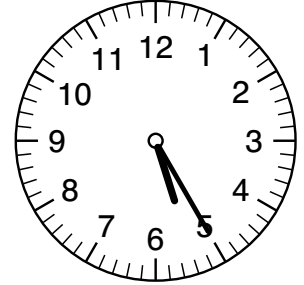
2:55 Uhr



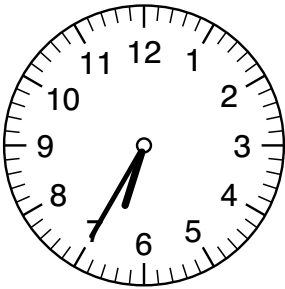
9:40 Uhr



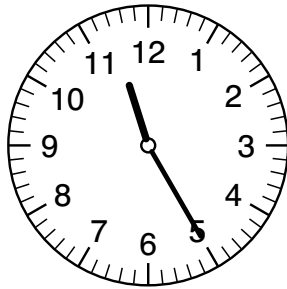
_____ Uhr



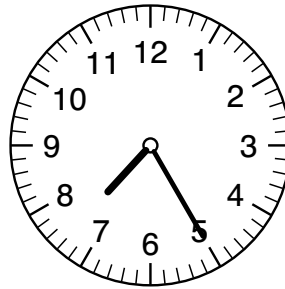
_____ Uhr



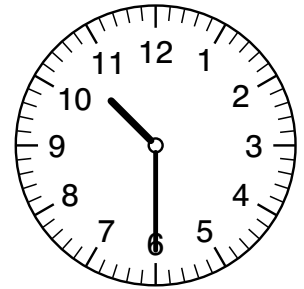
_____ Uhr



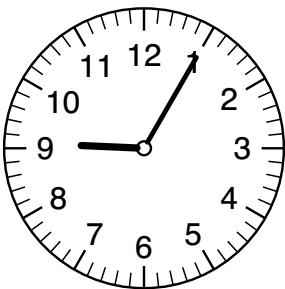
_____ Uhr



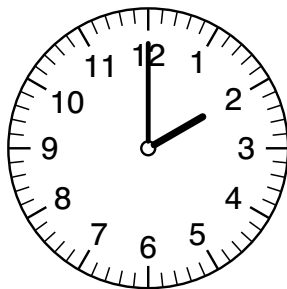
_____ Uhr



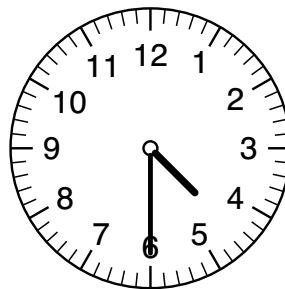
_____ Uhr



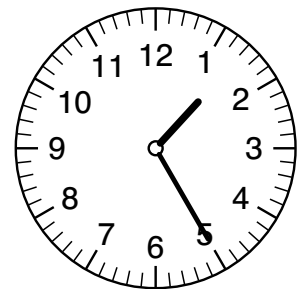
_____ Uhr



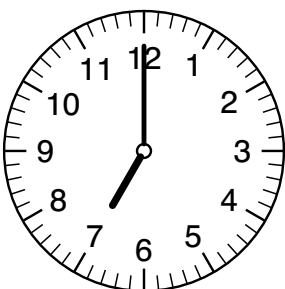
_____ Uhr



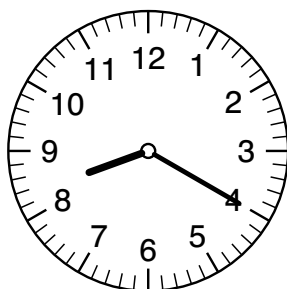
_____ Uhr



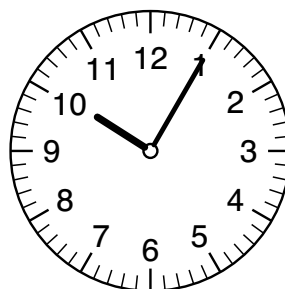
_____ Uhr



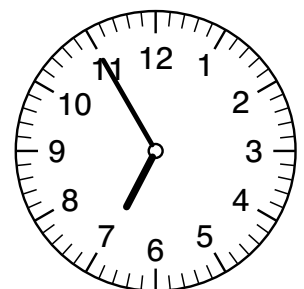
_____ Uhr



_____ Uhr

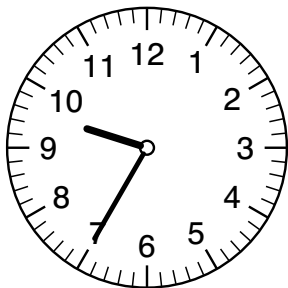


_____ Uhr

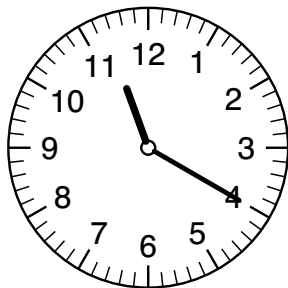


_____ Uhr

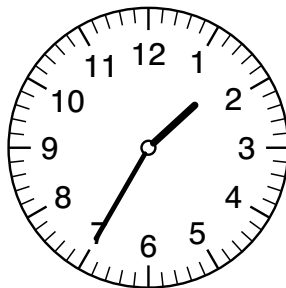
Der große Zeiger zeigt die Stunde an.
Der kleine Zeiger zeigt die Minuten an.
Bei den Minuten hilft dir auch die Beschriftung der großen Uhr auf der ersten Seite!



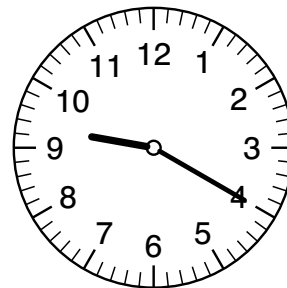
_____ Uhr



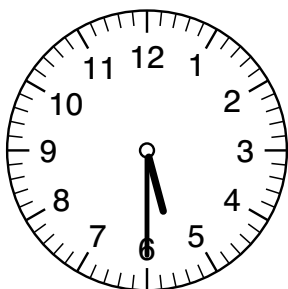
_____ Uhr



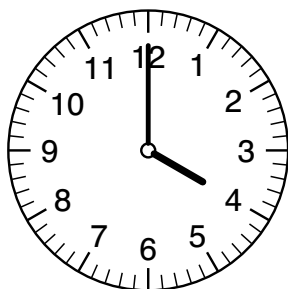
_____ Uhr



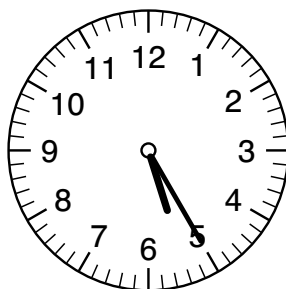
_____ Uhr



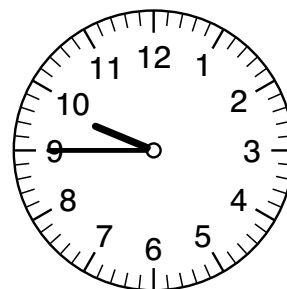
_____ Uhr



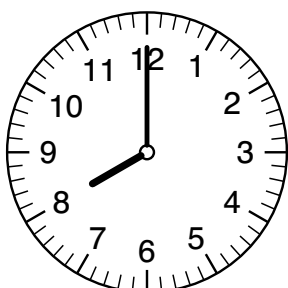
_____ Uhr



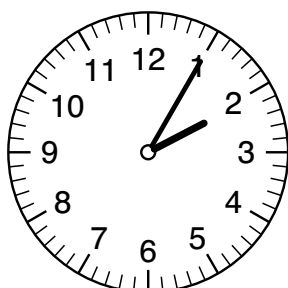
_____ Uhr



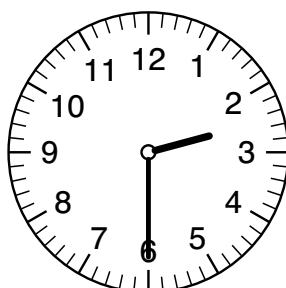
_____ Uhr



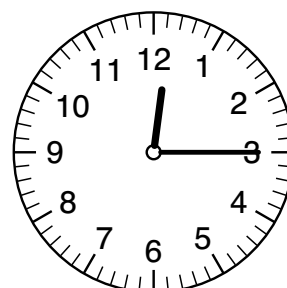
_____ Uhr



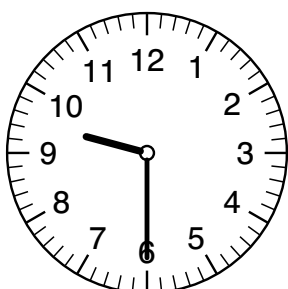
_____ Uhr



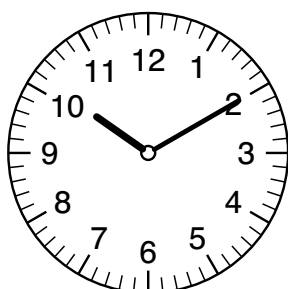
_____ Uhr



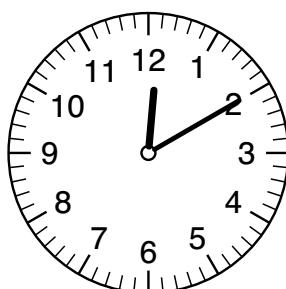
_____ Uhr



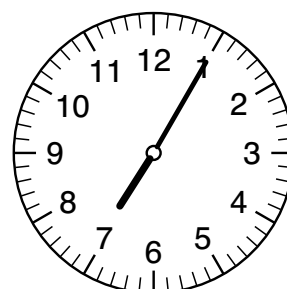
_____ Uhr



_____ Uhr

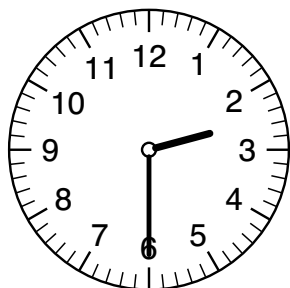


_____ Uhr

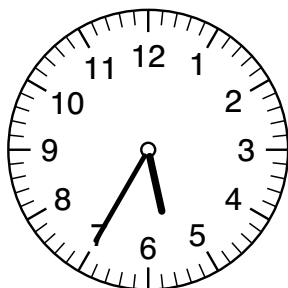


_____ Uhr

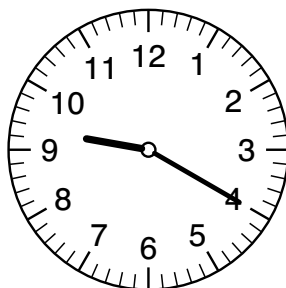
Der große Zeiger zeigt die Stunde an.
 Der kleine Zeiger zeigt die Minuten an.
 Bei den Minuten hilft dir auch die Beschriftung der
 großen Uhr auf der ersten Seite!



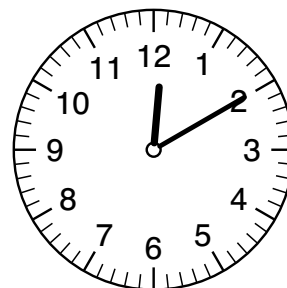
_____ Uhr



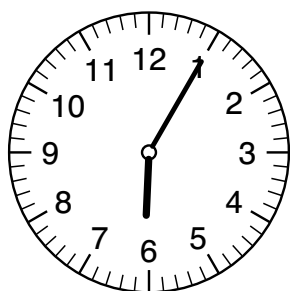
_____ Uhr



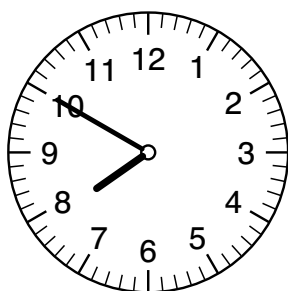
_____ Uhr



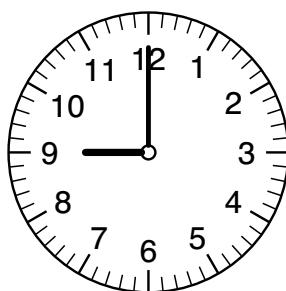
_____ Uhr



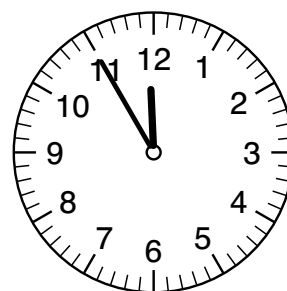
_____ Uhr



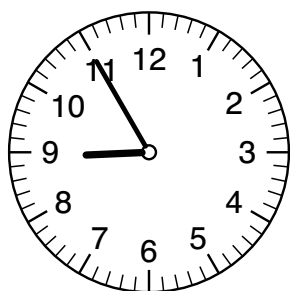
_____ Uhr



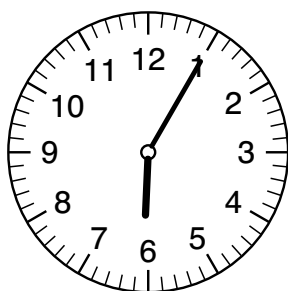
_____ Uhr



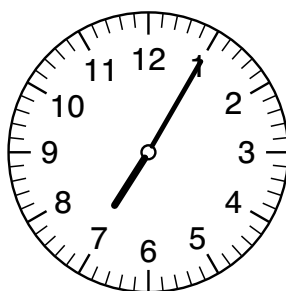
_____ Uhr



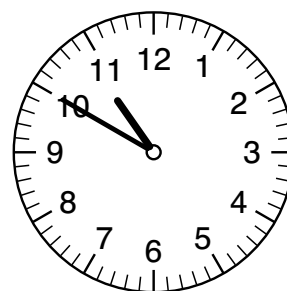
_____ Uhr



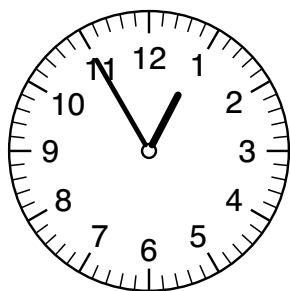
_____ Uhr



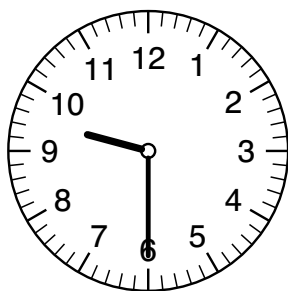
_____ Uhr



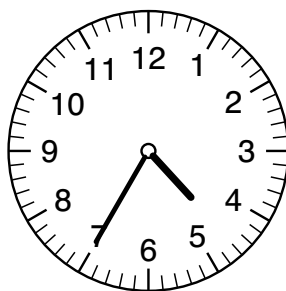
_____ Uhr



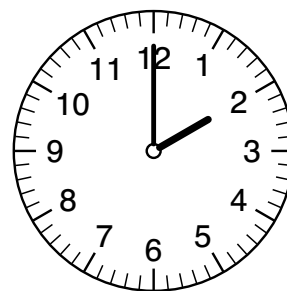
_____ Uhr



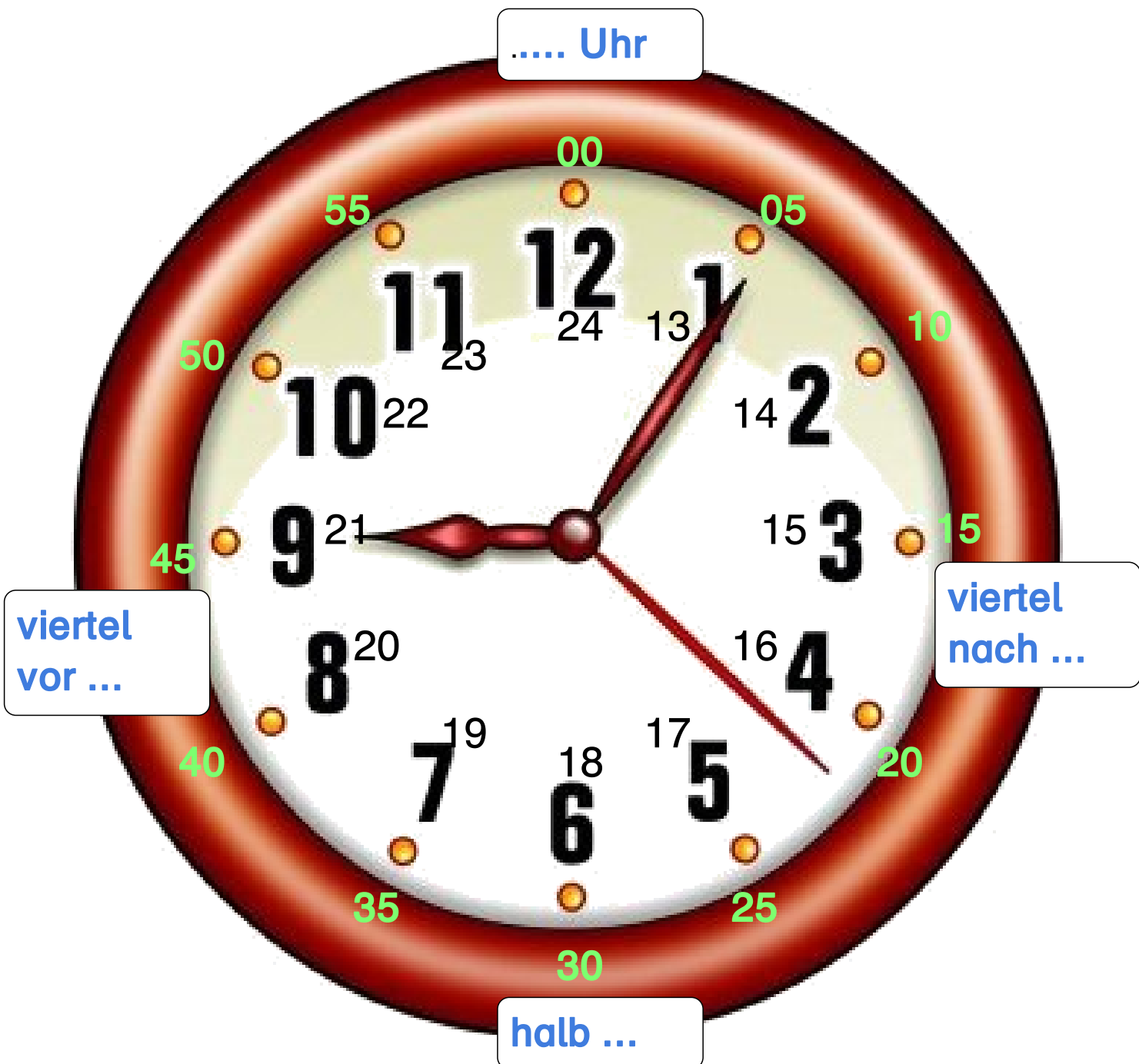
_____ Uhr



_____ Uhr



_____ Uhr

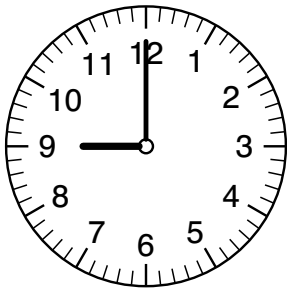


Eine Uhr hat 2 oder 3 Zeiger.

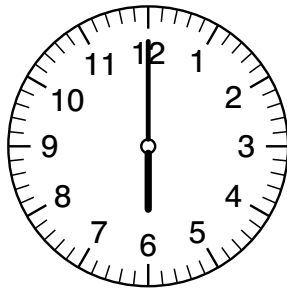
Der kleine, dicke Zeiger zeigt die Stunden an.

Der große, dünne Zeiger zeigt die Minuten an.

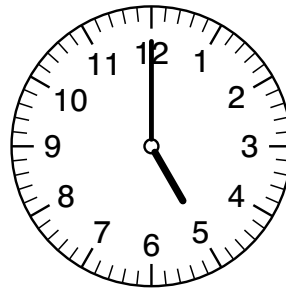
Manchmal gibt es auch noch einen ganz dünnen Sekundenzeiger.



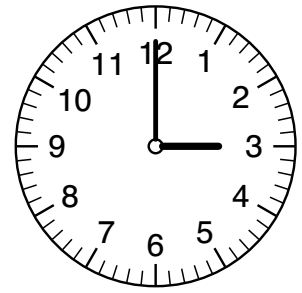
9:00 Uhr



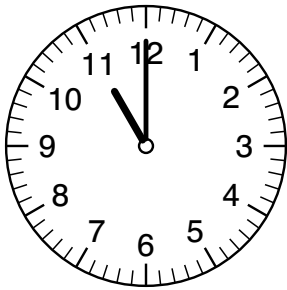
18:00 Uhr



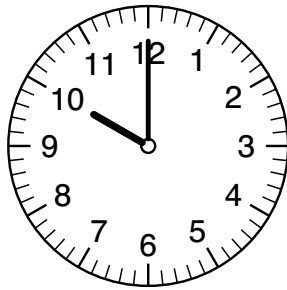
17:00 Uhr



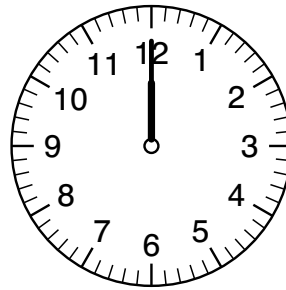
15:00 Uhr



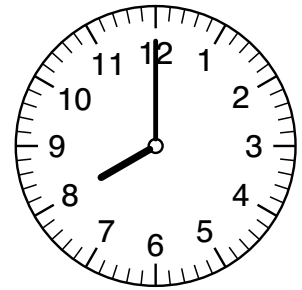
23:00 Uhr



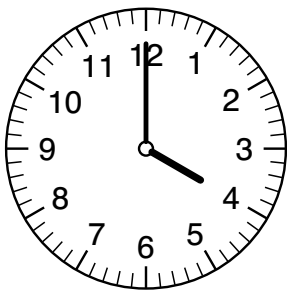
22:00 Uhr



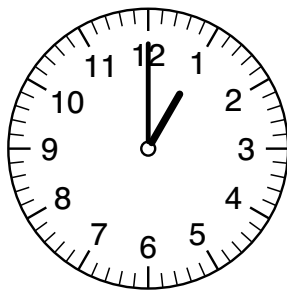
0:00 Uhr



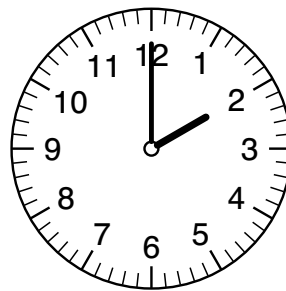
20:00 Uhr



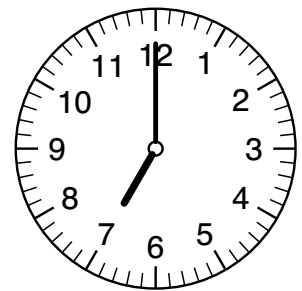
4:00 Uhr



1:00 Uhr



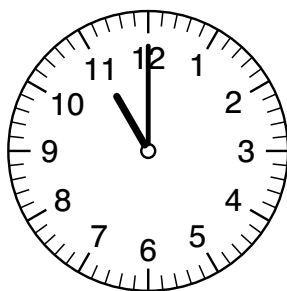
14:00 Uhr



19:00 Uhr

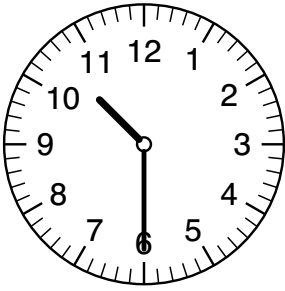
Wenn der große Zeiger auf 12 steht, ist es genau ... Uhr.

Der kleine Zeiger zeigt uns an, welche Stunde gerade ist.

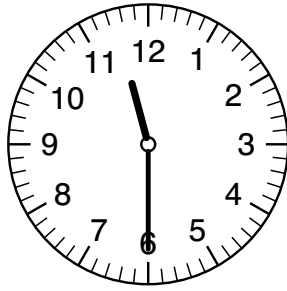


11 Uhr

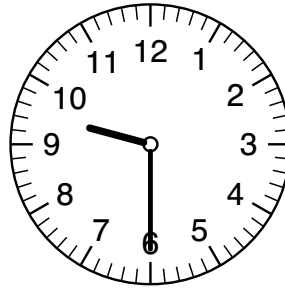
11:00 Uhr



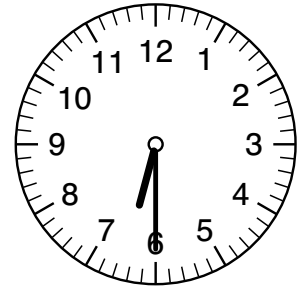
22:30 Uhr



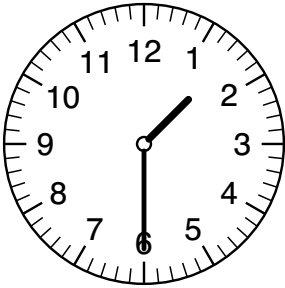
11:30 Uhr



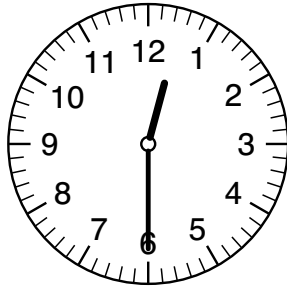
21:30 Uhr



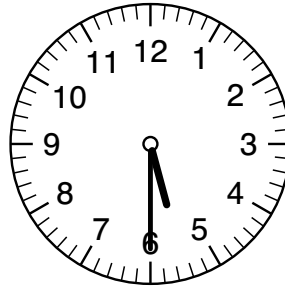
6:30 Uhr



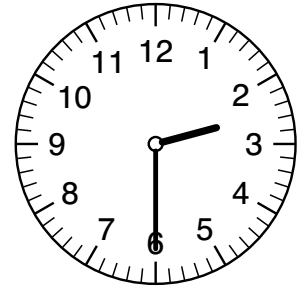
13:30 Uhr



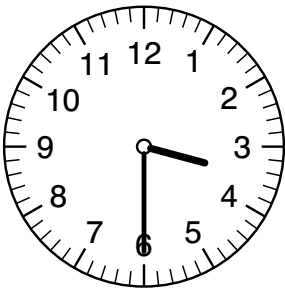
0:30 Uhr



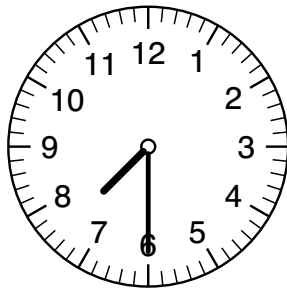
17:30 Uhr



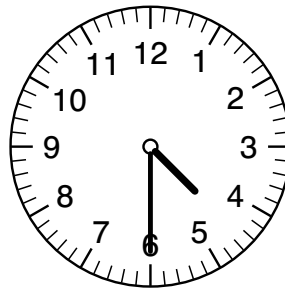
14:30 Uhr



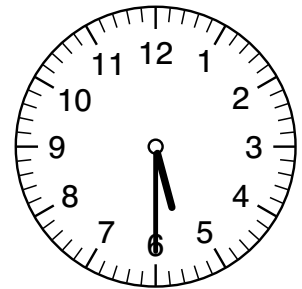
15:30 Uhr



19:30 Uhr



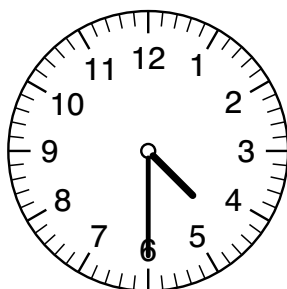
16:30 Uhr



5:30 Uhr

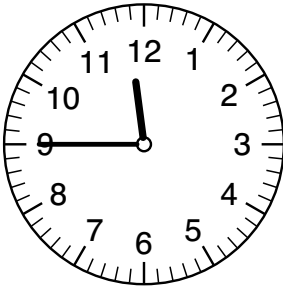
Wenn der große Zeiger auf 6 steht, ist es die halbe Stunde erreicht

Der kleine Zeiger zeigt uns an, zu welcher Stunde er als nächstes kommt oder was gerade vorbei ist.

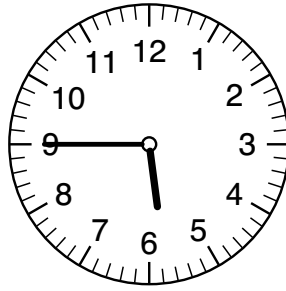


halb 5

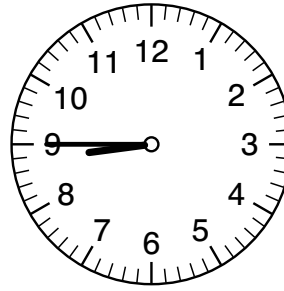
4:30 Uhr



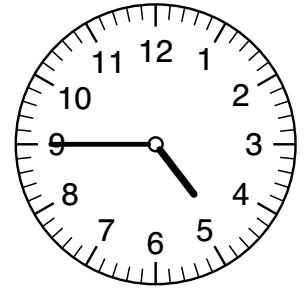
11:45 Uhr



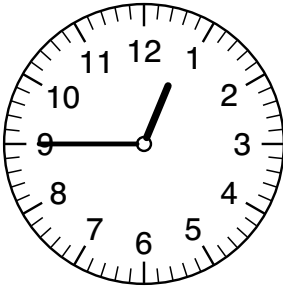
17:45 Uhr



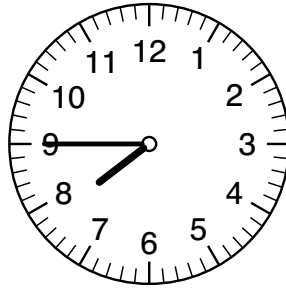
8:45 Uhr



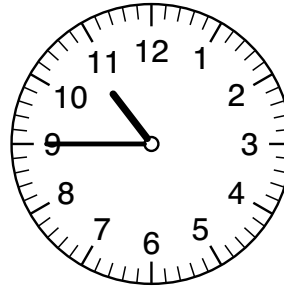
16:45 Uhr



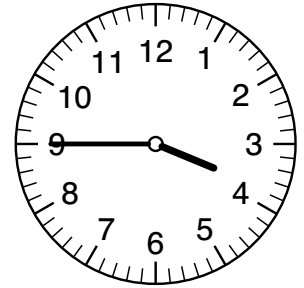
12:45 Uhr



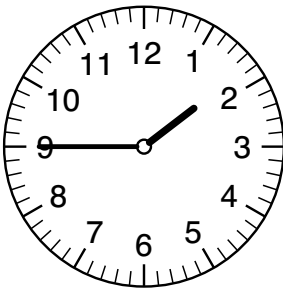
19:45 Uhr



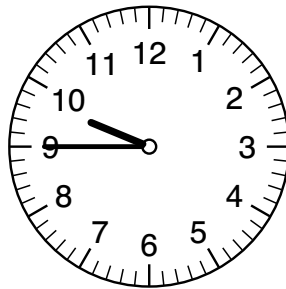
10:45 Uhr



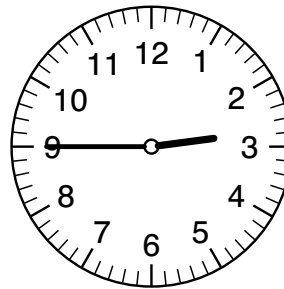
3:45 Uhr



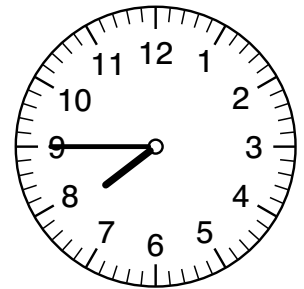
13:45 Uhr



21:45 Uhr



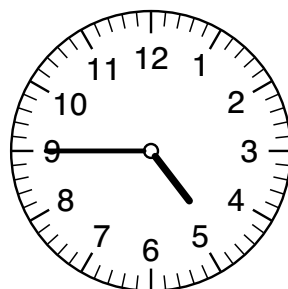
14:45 Uhr



7:45 Uhr

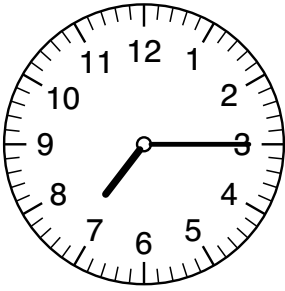
Wenn der große Zeiger auf 9 steht, ist es viertel vor der Stunde.

Der kleine Zeiger zeigt uns an, zu welcher Stunde er als nächstes kommt.

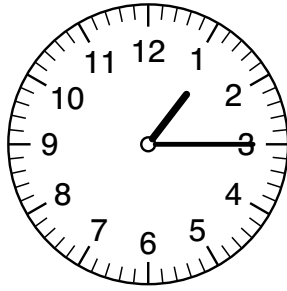


viertel vor 5

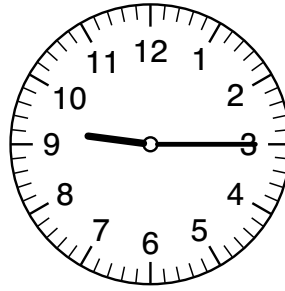
4:45 Uhr



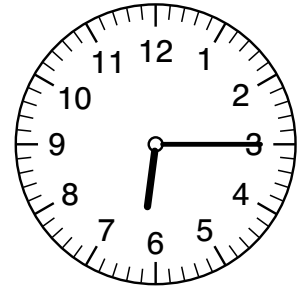
7:15 Uhr



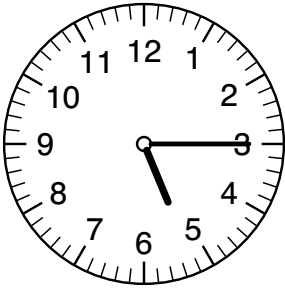
1:15 Uhr



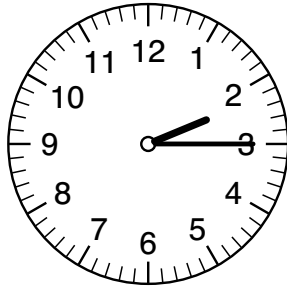
21:15 Uhr



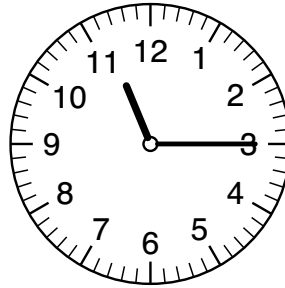
18:15 Uhr



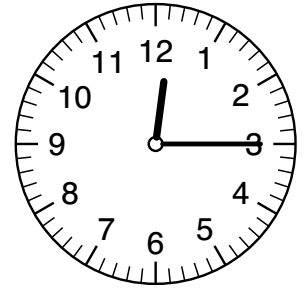
17:15 Uhr



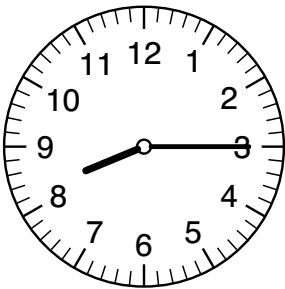
14:15 Uhr



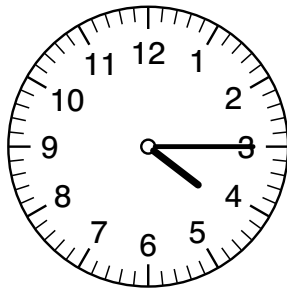
23:15 Uhr



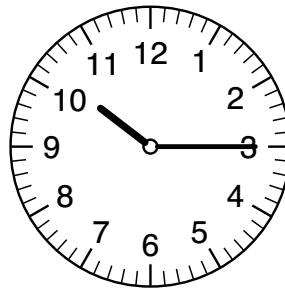
12:15 Uhr



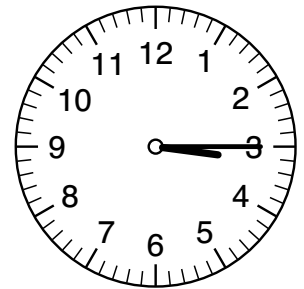
20:15 Uhr



16:15 Uhr



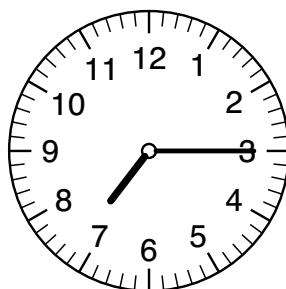
22:15 Uhr



 Uhr

Wenn der große Zeiger auf 3 steht, ist es viertel nach der Stunde.

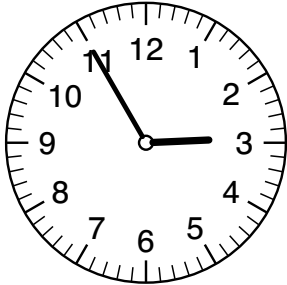
Der kleine Zeiger zeigt uns an, welche Stunde gerade vorbei ist.



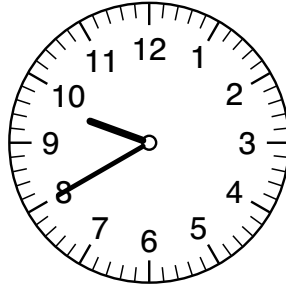
viertel nach 7

7:15 Uhr

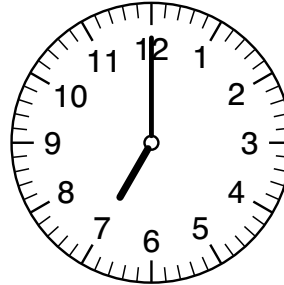
Der große Zeiger zeigt die Stunde an.
Der kleine Zeiger zeigt die Minuten an.
Bei den Minuten hilft dir auch die Beschriftung der
großen Uhr auf der ersten Seite!



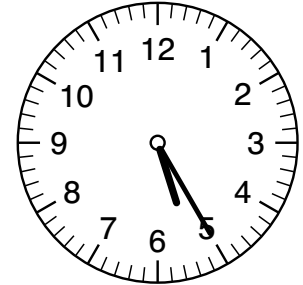
2:55 Uhr



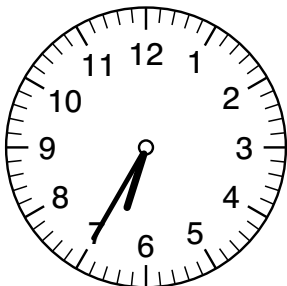
9:40 Uhr



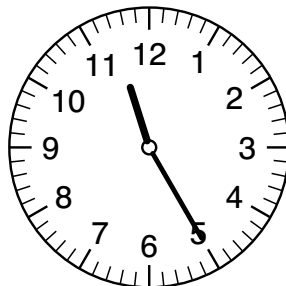
7:00 Uhr



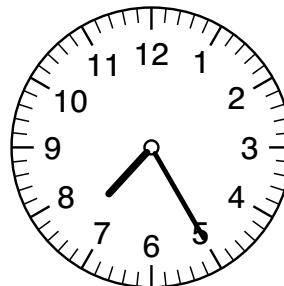
5:25 Uhr



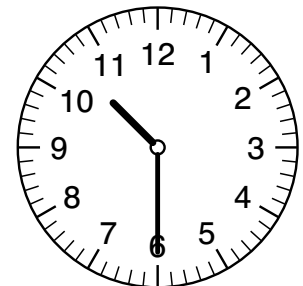
6:35 Uhr



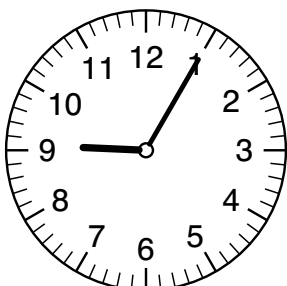
11:25 Uhr



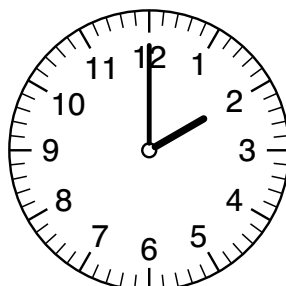
7:25 Uhr



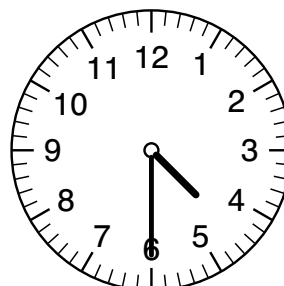
22:30 Uhr



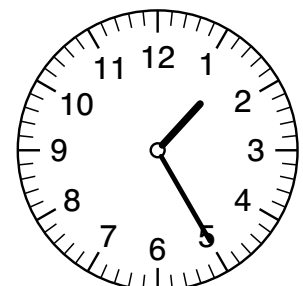
21:05 Uhr



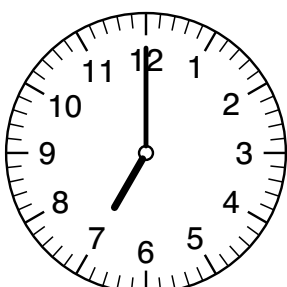
2:00 Uhr



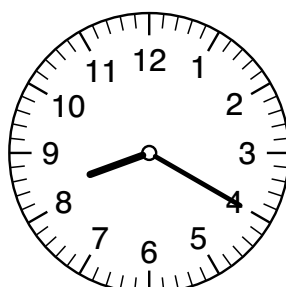
16:30 Uhr



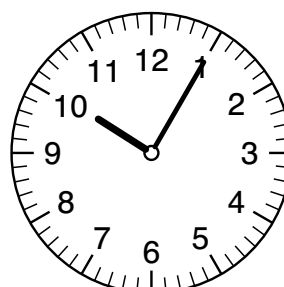
1:25 Uhr



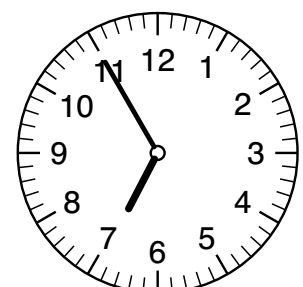
7:00 Uhr



20:20 Uhr

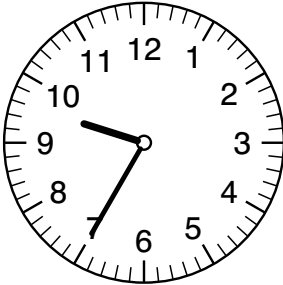


10:05 Uhr

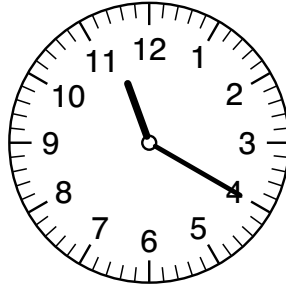


18:55 Uhr

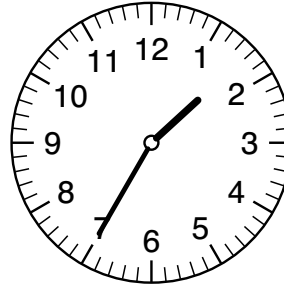
Der große Zeiger zeigt die Stunde an.
Der kleine Zeiger zeigt die Minuten an.
Bei den Minuten hilft dir auch die Beschriftung der großen Uhr auf der ersten Seite!



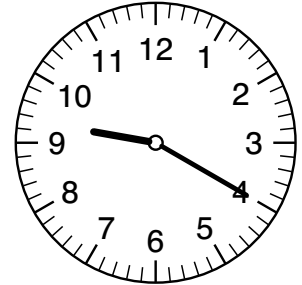
21:35 Uhr



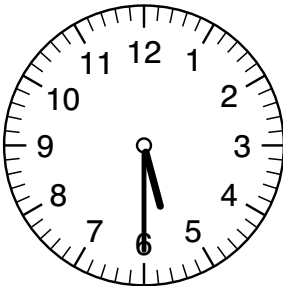
23:20 Uhr



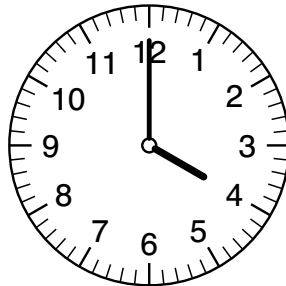
1:35 Uhr



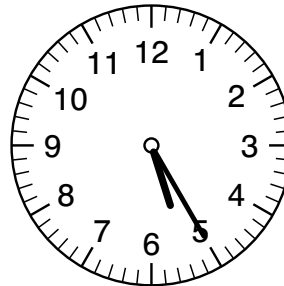
9:20 Uhr



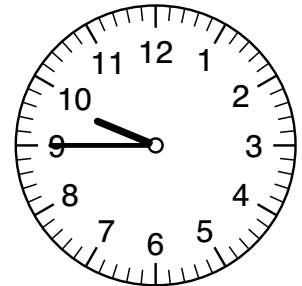
17:30 Uhr



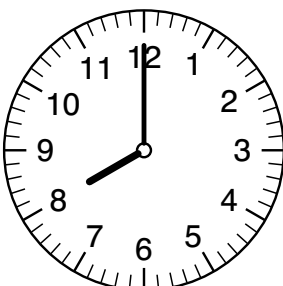
16:00 Uhr



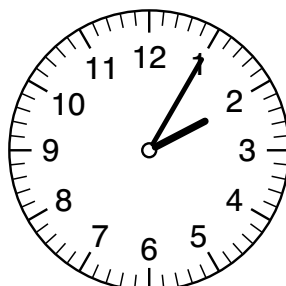
17:25 Uhr



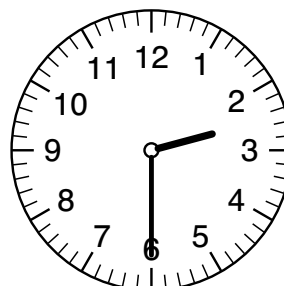
9:45 Uhr



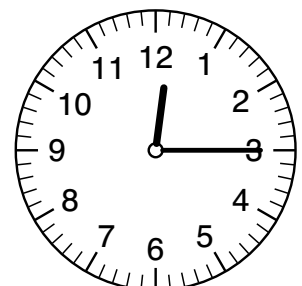
8:00 Uhr



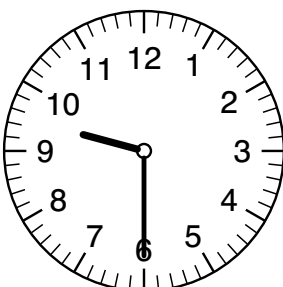
14:05 Uhr



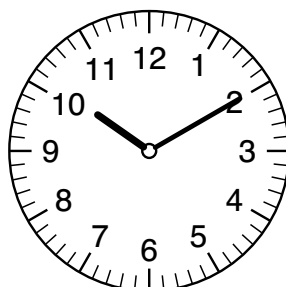
14:30 Uhr



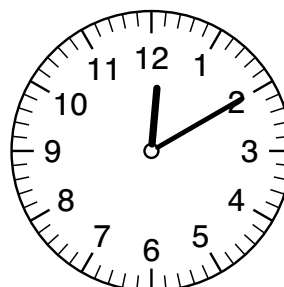
12:15 Uhr



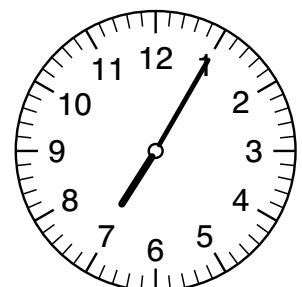
21:30 Uhr



22:10 Uhr

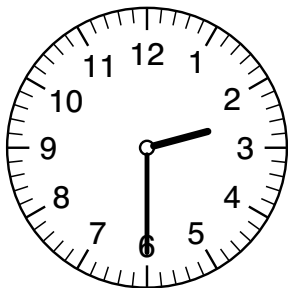


12:10 Uhr

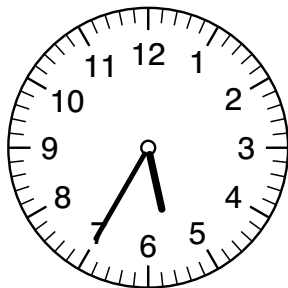


19:05 Uhr

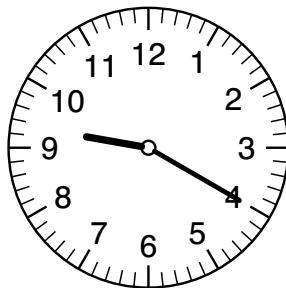
Der große Zeiger zeigt die Stunde an.
Der kleine Zeiger zeigt die Minuten an.
Bei den Minuten hilft dir auch die Beschriftung der großen Uhr auf der ersten Seite!



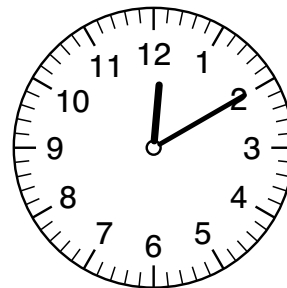
2:30 Uhr



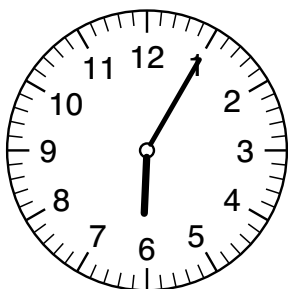
17:35 Uhr



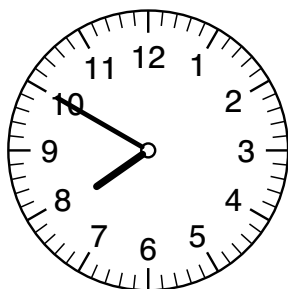
9:20 Uhr



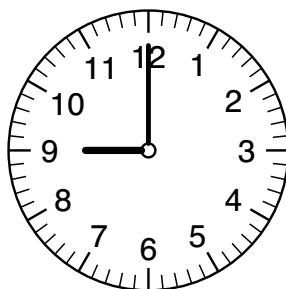
12:10 Uhr



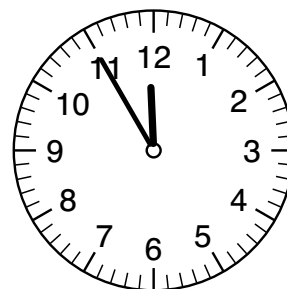
6:05 Uhr



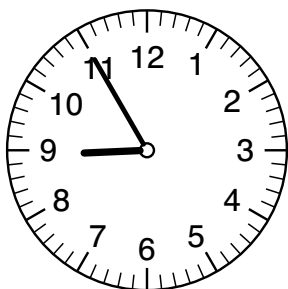
7:50 Uhr



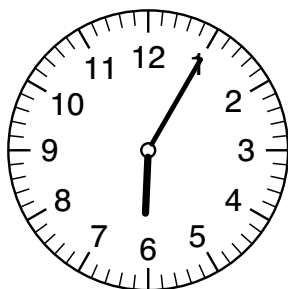
9:00 Uhr



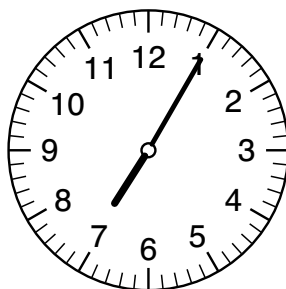
23:55 Uhr



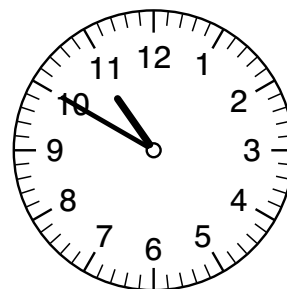
20:55 Uhr



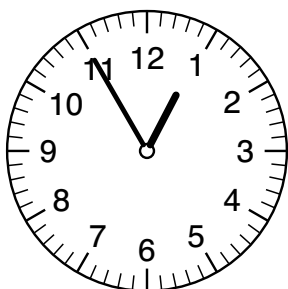
18:05 Uhr



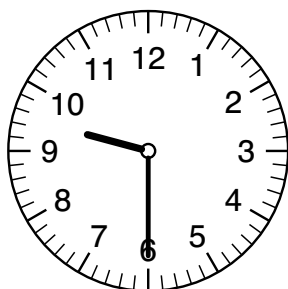
7:05 Uhr



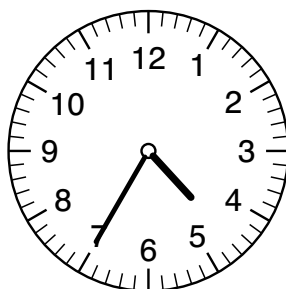
22:50 Uhr



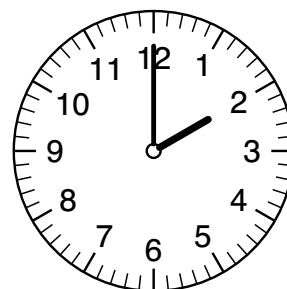
0:55 Uhr



9:30 Uhr



16:35 Uhr



14:00 Uhr