



lesen

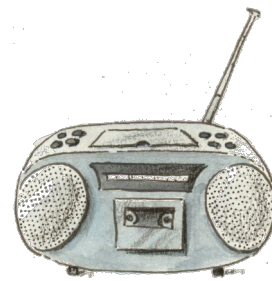
denken



verstehen

Teil 2

D N S C H E I K C K



|   |   |   |   |   |   |   |   |   |   |   |   |
|---|---|---|---|---|---|---|---|---|---|---|---|
| M | O | D | E | L | D | A | R | U | M | O | B |
| Y | X | Y | C | E | U | Q | X | P | U | M | W |
| F | W | B | I | X | V | R | F | M | L | X | U |
| Z | K | I | X | C | M | A | W | R | H | B | F |
| K | W | I | L | D | B | D | A | D | F | M | D |
| I | D | E | E | M | G | I | L | A | B | O | O |
| U | E | R | D | E | P | O | D | M | D | T | S |
| D | Y | U | X | Q | V | U | C | E | U | O | E |
| U | R | H | N | E | T | M | F | J | M | R | H |
| R | R | I | H | A | K | F | J | V | M | R | L |
| S | A | O | C | G | F | N | Z | Z | F | A | O |
| T | D | A | M | I | T | L | L | X | C | D | R |

Diese Wörter findest du im Suchsel:

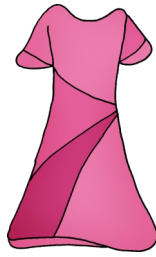


DAME, DARUM, DAMIT, DOSE,  
DUMM, ERDE, IDEE, MODE, RAD,  
RADIO, WALD, WILD, DURST,  
MOTORRAD





Erde



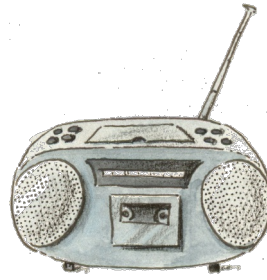
Dame



Rad



Durst



Dose



Idee



Wald



Motorrad

Mode



Radio



Male den Wald !

Male die Dose mit  
Wurst !

Male das Rad !

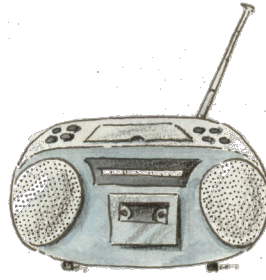
Male Erde !

Male das rote  
Motorrad !

Male lila Mode!



- Wald
- Wal
- Wetter



- Rad
- Radio
- Ratte

- Erde
- Emma
- Esel



- Dose
- Dame
- Durst



- Rat
- Rad
- Radio

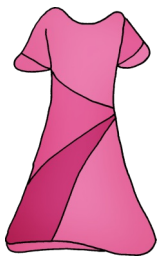


- Mode
- Motor
- Motorrad

- des
- das
- Durst



- Idee
- Ida
- Isa



- Made
- Mode
- Mitte



- Dame
- Dose
- dumm

- alt
- rot
- dumm

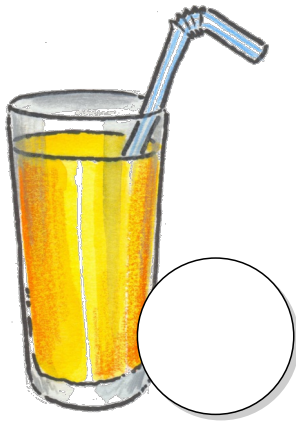


- wild
- Wald
- Wolle

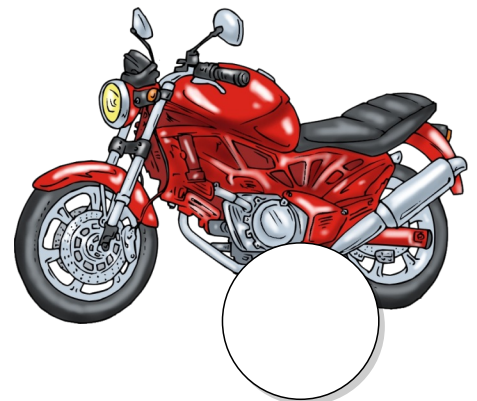
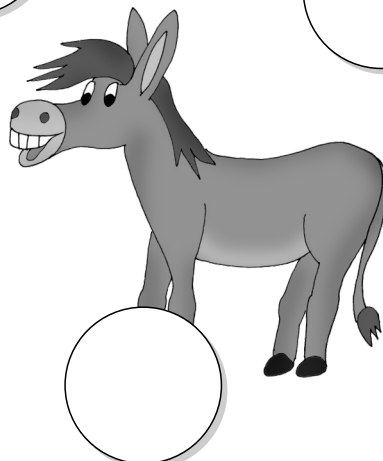
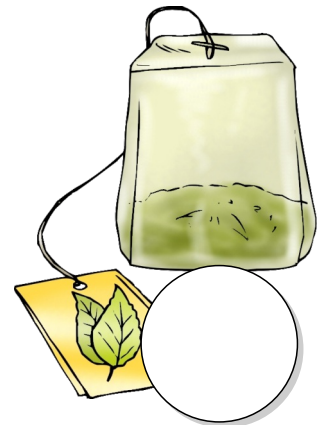
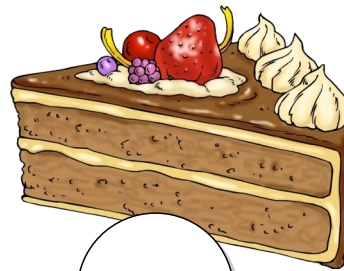
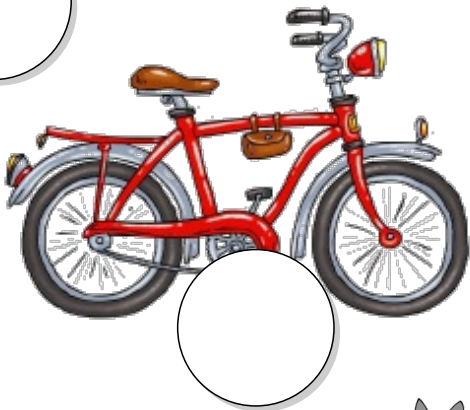
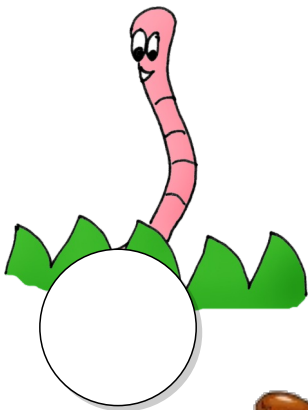
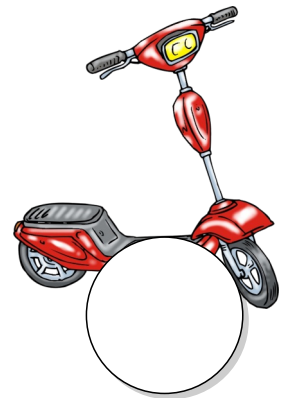




# Welcher Satz gehört zu welchem Bild?



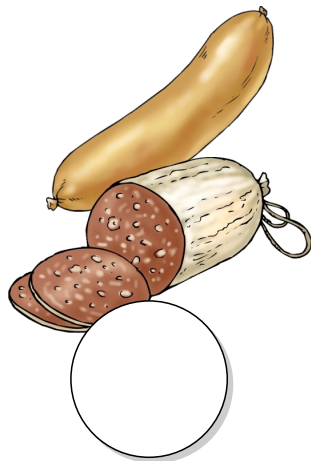
1. Er ist mit dem Motorrad da.
2. Er ist mit dem Roller da.
3. Er ist mit dem Rad da.
4. Er will die Dose mit Limo.
5. Er will die Dose mit Tee.
6. Er will die Dose mit Wurst.
7. Die Dame will Mode.
8. Ida isst Torte.
9. Der Esel ist wild.
10. Der Wurm ist in der Erde.



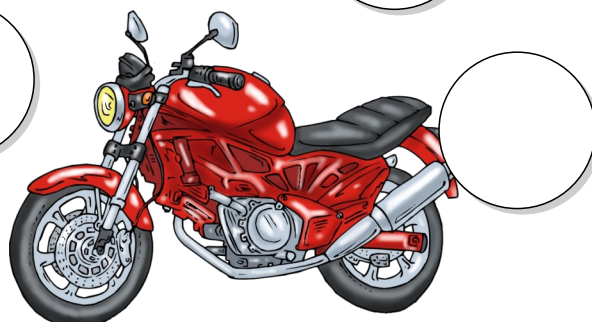
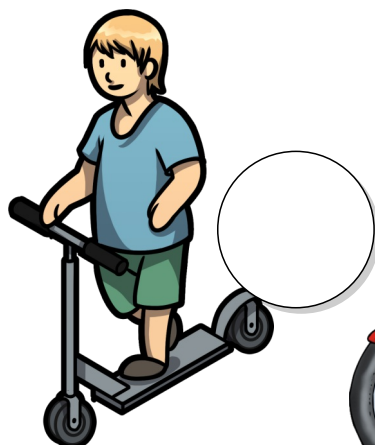
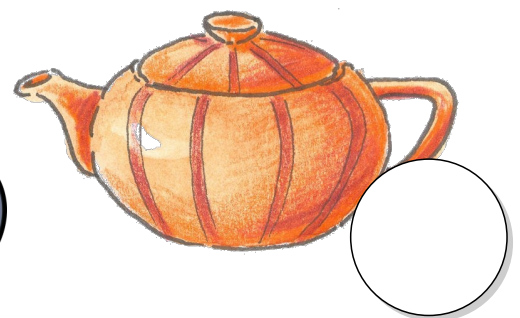
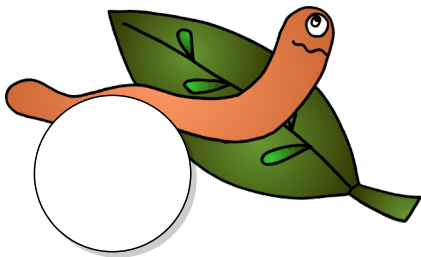
# Viele Fragen



1. Wo ist die **Limo**?
2. Wo ist die **Dose** mit Wurst?
3. **Warum** ist der Wurm da?
4. **Warum** ist der **Esel** wild?
5. **Warum** will **Oma** Tee?



6. Wer ist mit dem **Roller** da?
7. Wer ist mit dem **Rad** da?
8. Wer ist mit dem **Motorrad** da?
9. Willst du **Limo** oder Tee?
10. Willst du **Wurst** oder **Salami**?



# DERESELISTWILD

|  |
|--|
|  |
|  |
|  |

# ERISTMITDEMRADDA

|  |
|--|
|  |
|  |
|  |

|  |
|--|
|  |
|  |
|  |

# ERWILLDIEDOSEMITLIMO

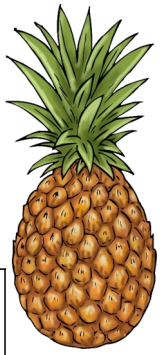
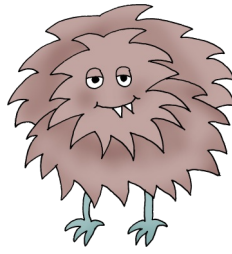
|  |
|--|
|  |
|  |
|  |

|  |
|--|
|  |
|  |
|  |

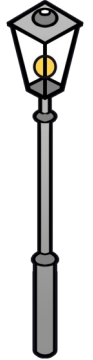
# MAMAISSTDIETORTE

|  |
|--|
|  |
|  |
|  |

|  |
|--|
|  |
|  |
|  |



|   |   |   |   |   |   |   |   |   |   |   |   |
|---|---|---|---|---|---|---|---|---|---|---|---|
| M | I | Y | E | H | G | S | G | E | N | D | E |
| O | P | L | A | T | E | R | N | E | D | U | D |
| N | Y | J | F | Q | Y | Z | Q | J | Q | O | I |
| S | A | F | N | U | M | M | E | R | E | U | T |
| T | N | Y | K | D | O | N | N | E | R | C | M |
| E | A | V | X | B | F | N | U | S | S | M | A |
| R | N | M | L | J | J | V | B | B | C | Y | N |
| P | A | A | A | N | O | B | L | F | H | M | N |
| N | S | N | N | B | X | H | A | O | M | M | U |
| A | C | T | D | S | X | H | D | I | U | O | Z |
| S | Z | E | D | G | L | I | E | J | K | N | F |
| E | D | L | Y | V | Q | U | N | J | Z | D | Z |



Diese Wörter findest du im Suchsel:

ANANAS, DONNER, ENDE, MANN,

LADEN, LAND, LATERNE, MANTEL,

MONSTER, MOND, NASE, NUMMER,

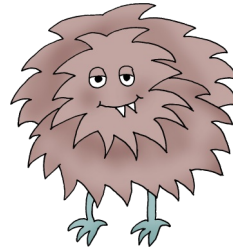
NUSS



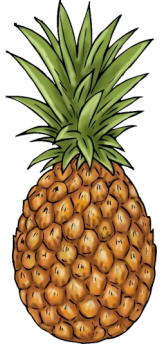




Mond



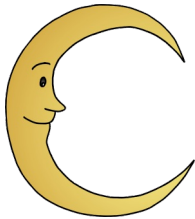
Donner



Laterne



Land



Nuss



Mann



Mantel

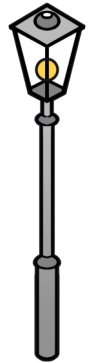
Nummer



Ananas

Nase

Monster



Male die Nuss !

Male die Laterne !

Male den lila Mantel !

Male die Nummer !

Male das rote Monster !

Male die rote Nase !



|   |   |   |   |   |   |   |   |   |   |   |   |
|---|---|---|---|---|---|---|---|---|---|---|---|
| W | K | I | M | Y | W | E | H | F | N | D | I |
| P | F | T | E | O | I | U | Y | J | Y | O | Q |
| A | Z | A | L | Q | N | L | Q | O | I | M | G |
| E | L | N | O | M | D | T | Y | K | C | I | V |
| S | E | N | N | X | D | L | E | S | E | N | F |
| O | R | E | E | K | J | J | V | C | B | O | C |
| N | N | Y | P | T | A | N | T | E | I | O | S |
| N | E | B | F | H | B | B | X | Q | V | R | A |
| E | N | J | C | S | X | G | U | C | Z | Z | N |
| J | S | L | I | J | K | D | I | N | O | F | D |
| D | Y | I | N | D | I | A | N | E | R | V | Q |
| U | J | Z | Z | M | A | L | E | N | S | T | X |

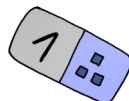
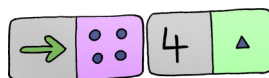
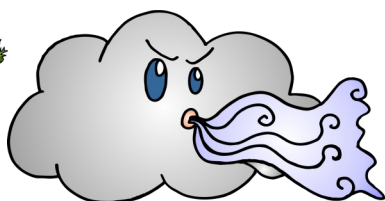
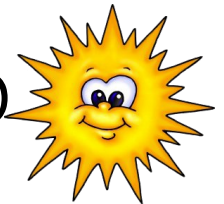
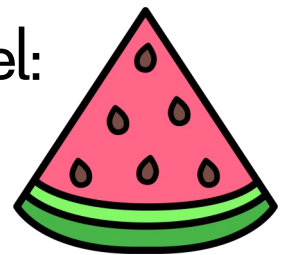


Diese Wörter findest du im Suchsel:

LERNEN, LESEN, MALEN, SAND,

SONNE, TANNE, TANTE, WIND,

DOMINO, MELONE, INDIANER, DINO





Male den Indianer !

Male den roten Dino !

Male die Melone !

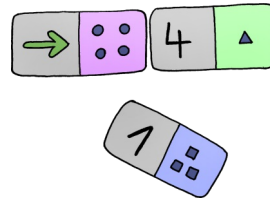
Male die Tannen !

Male Sand !

Male die Sonne !



- lesen
- malen
- lernen

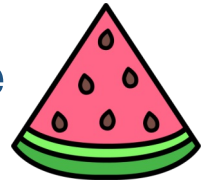


- Dose
- Domino
- Doris

- See
- Sand
- Sonne



- Melone
- Melanie
- Melli

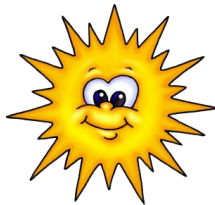


- Tonne
- Tanne
- Torte



- Dose
- Doris
- Dino

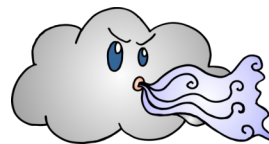
- Sonne
- Sand
- See



- lesen
- lernen
- malen

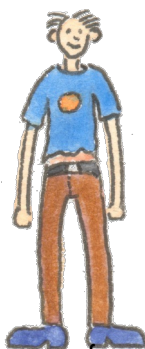


- Ittis
- Indianer
- immer

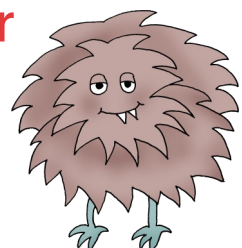


- Wand
- Wind
- Wunder

- Mama
- Mann
- Marder



- Monster
- Momo
- Mama







- Not
- Nummer
- Null

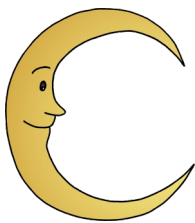


- Dose
- Donner
- Doris

- Nuss
- Not
- Nase



- Nadel
- Nase
- Name



- Mond
- Mund
- Mandel

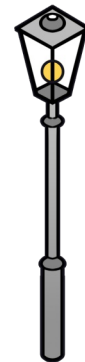


- Anna
- Ananas
- Adler

- Mann
- Mama
- Mantel



- Laterne
- Lama
- Land



- lesen
- lernen
- malen

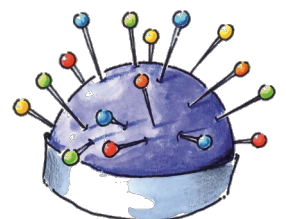


- Erde
- Sand
- Ende

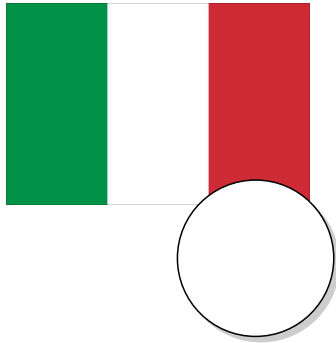
- Durst
- Dose
- dumm



- Nudel
- Nadel
- Name



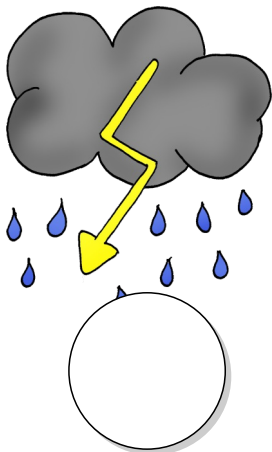
# Welcher Satz gehört zu welchem Bild?



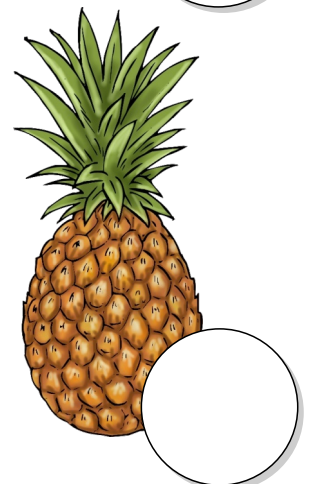
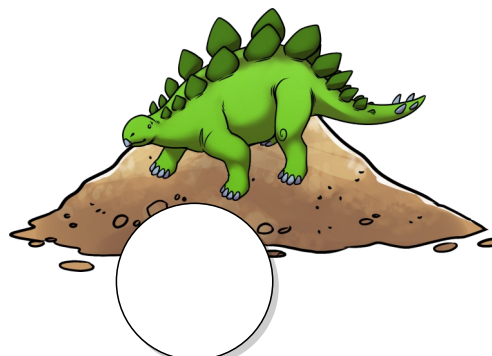
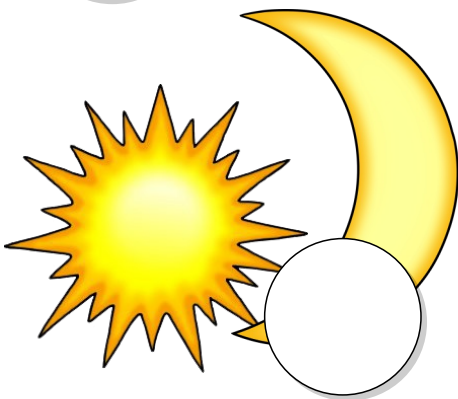
1. Das ist **Italien**.
2. Das **Monster** isst die Nuss.
3. Die **Nase** ist rot.



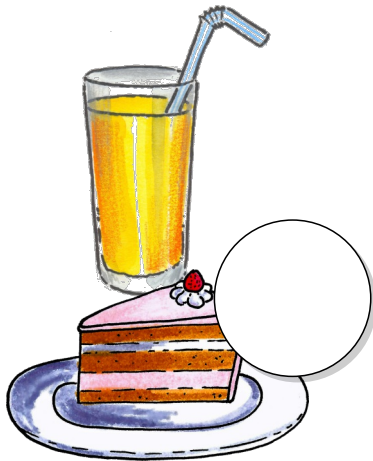
4. Das ist die **Nummer**.
5. Wind und **Donner** sind da.
6. **Mama** will **Ananas** essen.



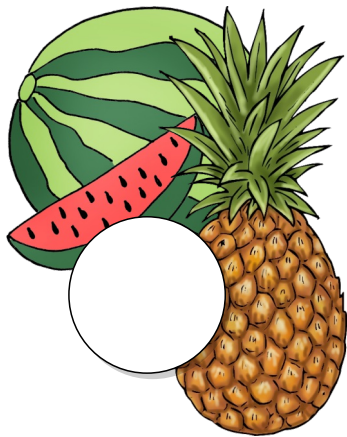
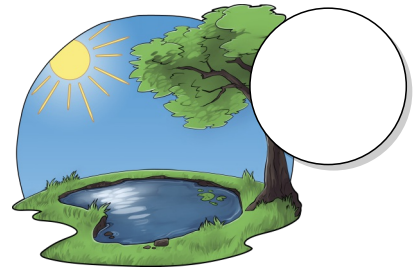
7. **Omas** rosa **Mantel** ist warm.
8. **Sonne** und **Mond** sind da.
9. Der **Dino** ist im Sand.



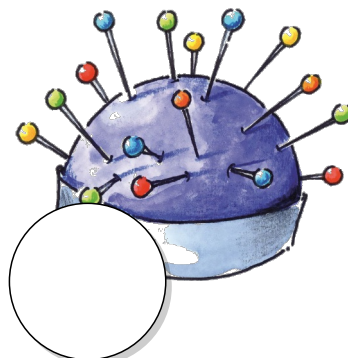
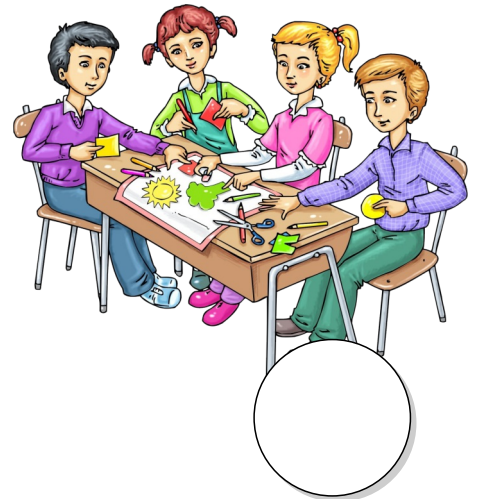
# Welcher Satz gehört zu welchem Bild?



1. Mama will Melone und Ananas.
2. Alle lesen.
3. Alle lernen.
4. Alle malen.
5. Die Tante will Limo und Torte.



6. Sonne am See
7. Der Indianer will Mais.
8. Die Tanne ist im Wald.
9. Oma will Nadeln.
10. Die Nase ist rot.



# DIETANNEISTIMWALD

|  |
|--|
|  |
|  |
|  |

# DIENASEISTROT

|  |
|--|
|  |
|  |
|  |

# OMASSTNUDELN

|  |
|--|
|  |
|  |
|  |

# DERINDIANERWILLMAIS

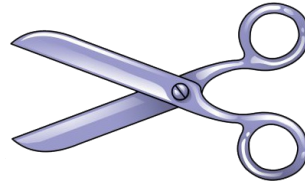
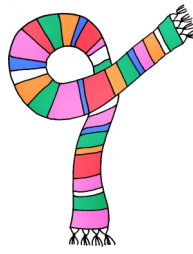
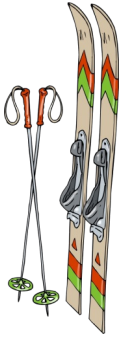
|  |
|--|
|  |
|  |
|  |

|  |
|--|
|  |
|  |
|  |

# MAMAWILLMELONEESSEN

|  |
|--|
|  |
|  |
|  |



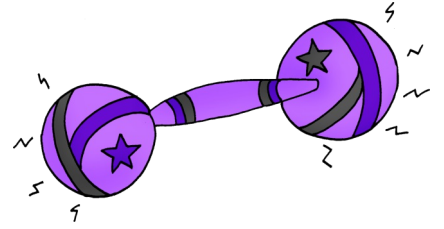
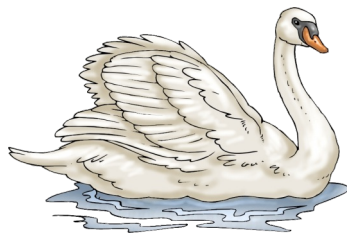


|   |   |   |   |   |   |   |   |   |   |   |   |
|---|---|---|---|---|---|---|---|---|---|---|---|
| L | K | M | H | T | S | W | K | I | Y | M | E |
| H | J | I | N | I | C | P | S | C | H | A | L |
| F | W | S | D | Y | H | J | C | A | Q | S | A |
| M | S | C | Q | L | L | Q | H | O | I | C | G |
| E | S | H | E | U | I | T | E | Y | K | H | S |
| N | C | E | C | V | M | X | R | B | F | I | C |
| S | H | N | M | J | M | J | E | V | L | N | H |
| C | I | B | C | Y | P | D | U | B | X | E | A |
| H | H | M | B | S | C | H | U | L | E | X | L |
| H | O | D | U | S | C | H | E | J | U | C | T |
| S | X | H | I | U | Z | Z | D | G | L | I | E |
| J | K | F | D | Y | V | Q | U | J | Z | Z | N |

Diese Wörter findest du im Suchsel:

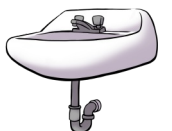
SCHI, SCHULE, DUSCHE, MASCHINE,  
MENSCH, MISCHEN, SCHAL,  
SCHALTEN, SCHERE, SCHLIMM

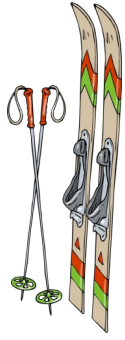




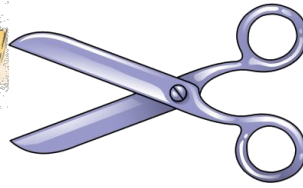
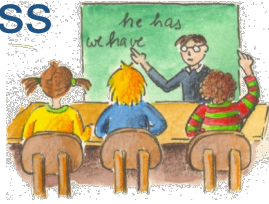
|   |   |   |   |   |   |   |   |   |   |   |   |
|---|---|---|---|---|---|---|---|---|---|---|---|
| L | K | H | T | W | K | I | Y | E | S | S | H |
| G | N | W | I | P | F | O | D | Y | C | C | J |
| A | Q | U | A | T | Z | Q | L | Q | H | H | O |
| I | G | N | W | A | E | U | T | Y | W | A | K |
| C | S | S | A | S | V | X | D | F | E | L | M |
| S | C | C | S | C | H | O | N | J | R | E | J |
| C | H | H | C | H | V | L | B | C | Y | P | N |
| H | L | O | H | E | B | F | H | M | B | X | H |
| W | O | O | E | M | S | C | H | L | U | S | S |
| A | S | U | N | C | S | T | I | S | C | H | X |
| N | S | H | I | U | Z | Z | D | G | L | I | J |
| K | F | D | Y | V | Q | U | J | Z | Z | B | T |

Diese Wörter findest du im Suchsel:  
 SCHLOSS, SCHLUSS, SCHON,  
 SCHWER, SCHWAN, TASCHE, TISCH,  
 WASCHEN, WUNSCH, SCHALE





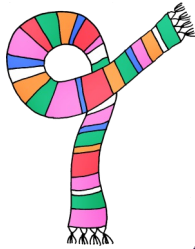
Schloss



Schale



Schere



Schi



Maschine



Tisch

Dusche



Schale

Schule



Schere



Male den Schal !

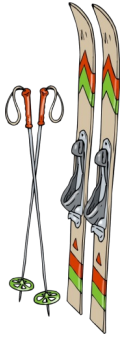
Male Schale der Nuss !

Male Schale am Tisch !

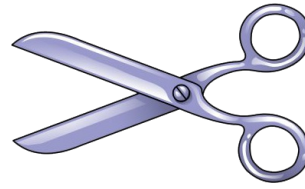
Male Mensch mit  
Schi !

Male die Schere !

Male die Dusche !

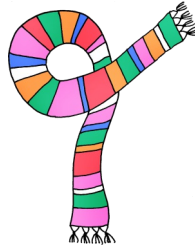


- Schal
- Schi
- Schule



- Schere
- Schale
- Schule

- Schule
- Schale
- Schal



- Maschine
- Masche
- mischen



- Schluss
- Schloss
- Schale



- Schule
- Schale
- Schal

- Schale
- Schule
- Schal



- Mensch
- Masche
- Mann



- Dusche
- Dame
- Dose



- Tisch
- Tasche
- Tusche

- Tasche
- Tisch
- Tusche

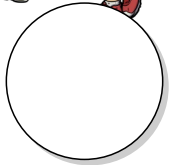


- Schal
- Schwan
- Schule





# Welcher Satz gehört zu welchem Bild?



1. Alle sind in der Schule.

2. Alle lesen.

3. Alle malen.

4. Alle lernen.

5. Alle sind nett.

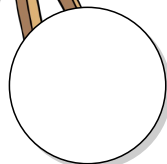
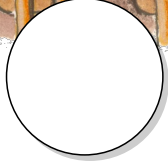
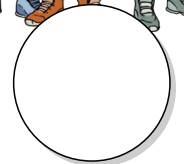
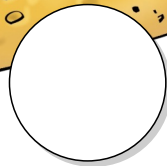
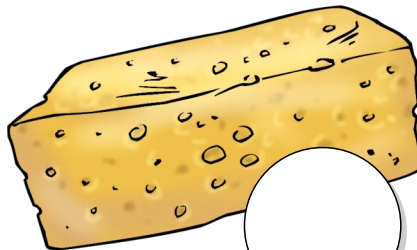
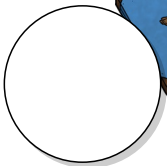
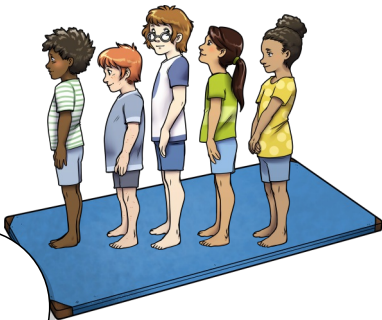
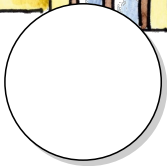
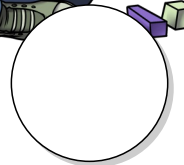
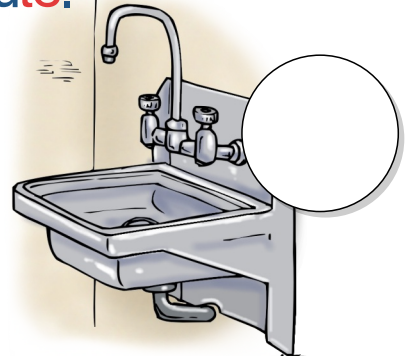
6. Mia turnt.

7. Nele und Roland sind im Turnsaal.

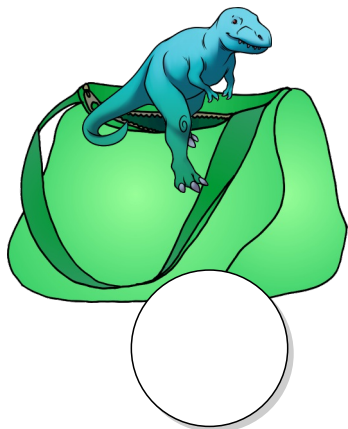
8. Alle wollen die Matte.

9. Alle wollen waschen.

10. Alle wollen den Schwamm.



# Welcher Satz gehört zu welchem Bild?



1. In der Tasche ist der Schwamm.

2. Der Dino ist in der Tasche.

3. In der Tasche ist die Dose.

4. Der Schal ist in der Tasche.

5. In der Tasche ist die Melone.

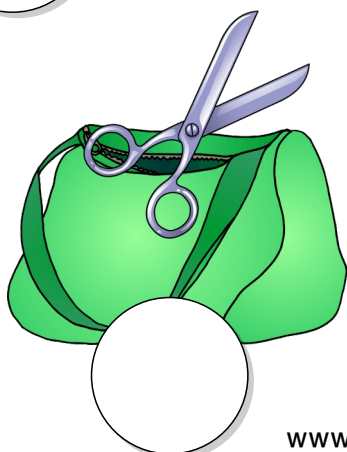
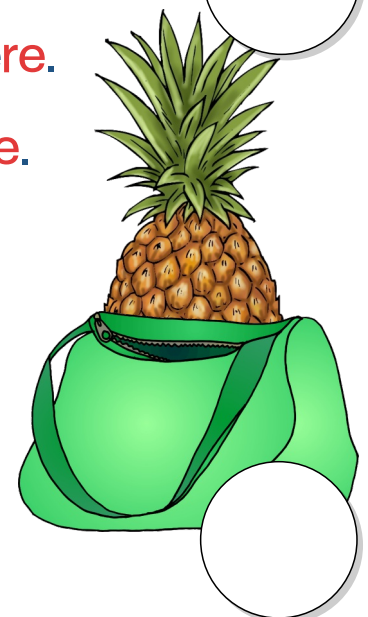
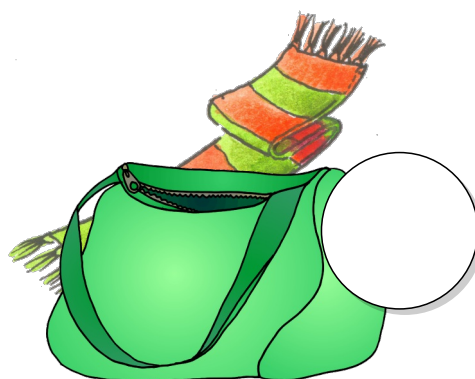
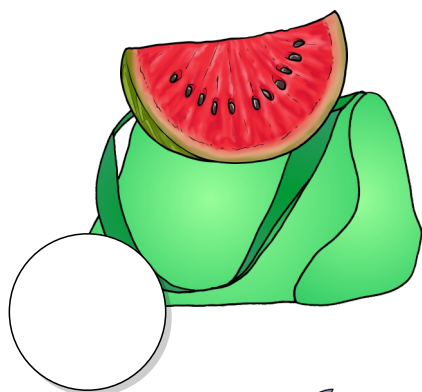
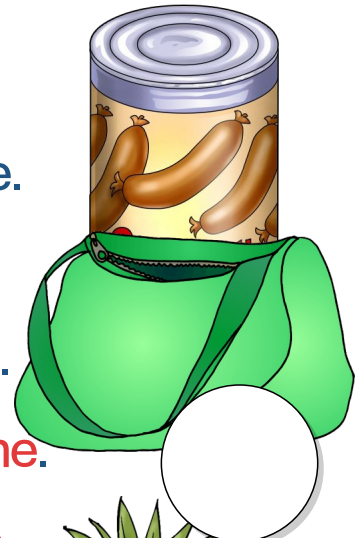
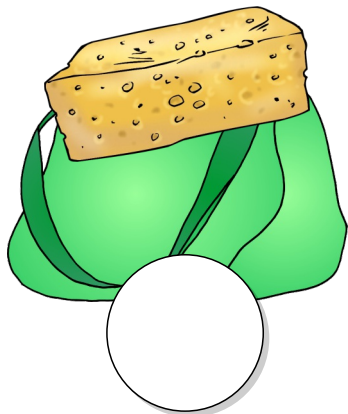
6. Die Nuss ist in der Tasche.

7. In der Tasche ist die Schere.

8. Die Ananas ist in der Tasche.

9. In der Tasche ist die Schere.

10. Die Limo ist in der Tasche.



# ALLEWOLLENWASCHEN

|  |
|--|
|  |
|  |
|  |

# ALLESINDNETTUNDLERNEN

|  |
|--|
|  |
|  |
|  |

|  |
|--|
|  |
|  |
|  |

# NELEISTIMTURNSAAL

|  |
|--|
|  |
|  |
|  |

# SIMONWILLDENSCHWAMM

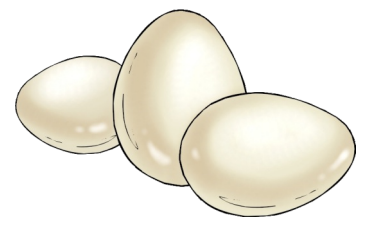
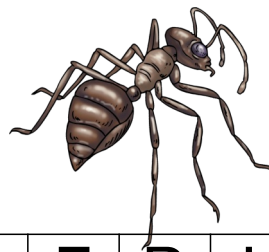
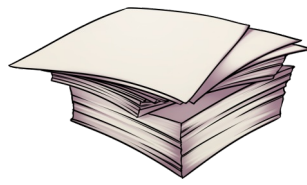
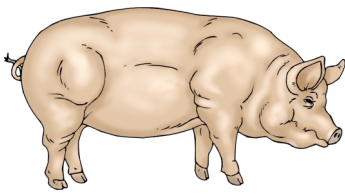
|  |
|--|
|  |
|  |
|  |

|  |
|--|
|  |
|  |
|  |

# DERDINOISTINDERTASCHE

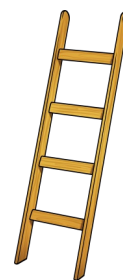
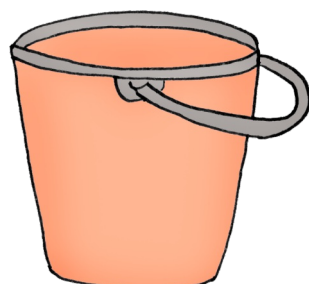
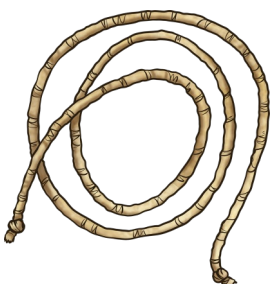
|  |
|--|
|  |
|  |
|  |

|  |
|--|
|  |
|  |
|  |

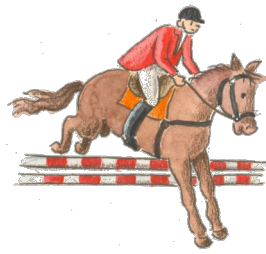


|   |   |   |   |   |   |   |   |   |   |   |   |
|---|---|---|---|---|---|---|---|---|---|---|---|
| F | E | L | E | I | T | E | R | L | O | B | Y |
| X | E | E | Y | C | E | U | Q | S | X | P | U |
| M | I | I | Q | U | W | O | I | C | X | V | F |
| J | N | S | E | L | X | U | E | H | T | Z | K |
| A | M | E | I | S | E | I | I | W | E | X | C |
| Q | A | I | M | L | B | F | S | E | I | L | K |
| B | L | F | E | M | G | B | U | I | L | P | Y |
| Y | X | Q | R | V | U | C | R | N | E | H | T |
| N | K | T | M | R | J | H | H | H | N | J | E |
| K | S | E | I | T | E | F | J | V | W | O | I |
| C | G | F | N | D | R | E | I | Z | Z | F | L |
| O | L | L | X | C | R | U | E | I | E | R | A |

Diese Wörter findest du im Suchsel:  
 SCHWEIN, SEITE, SEIL, TEIL, TEILEN,  
 DREI, AMEISE, EIER, EIMER, EINMAL,  
 EIS, LEITER, LEISE

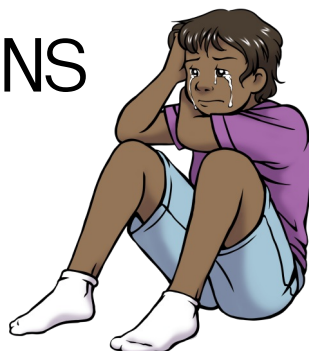




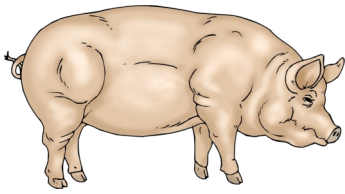


|   |   |   |   |   |   |   |   |   |   |   |   |
|---|---|---|---|---|---|---|---|---|---|---|---|
| Y | W | E | I | L | E | Q | F | F | L | O | B |
| D | Y | X | Y | C | Q | U | Q | M | X | P | S |
| E | R | R | M | J | W | F | W | E | B | I | E |
| I | E | W | E | X | V | F | M | I | L | X | I |
| N | I | E | I | U | Z | K | O | S | X | C | N |
| E | T | I | N | Q | A | M | U | E | F | K | E |
| B | E | L | E | I | Q | G | B | A | P | Y | F |
| X | R | Q | S | R | E | I | S | U | C | R | H |
| Q | J | F | M | F | W | E | I | N | J | I | H |
| H | K | K | F | J | W | E | I | N | E | N | V |
| C | O | C | G | F | N | Z | Z | F | O | L | L |
| X | R | E | I | S | E | C | R | E | I | N | S |

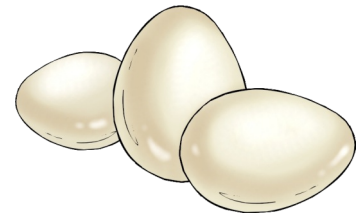
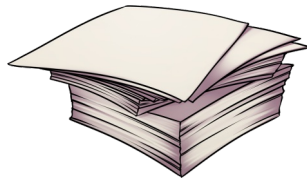
Diese Wörter findest du im Suchsel:  
MEISE, REIS, REISE, REITER, WEIL,  
WEIN, WEILE, WEINEN, DEINE, SEINE,  
MEINE, EINS



drei



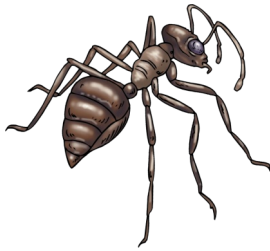
Seite



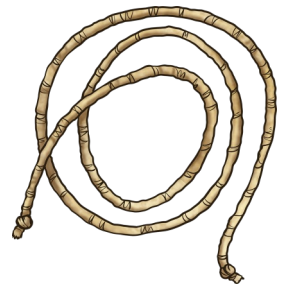
Seil

Schwein

Ameise

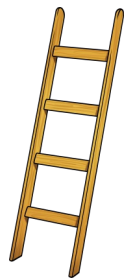
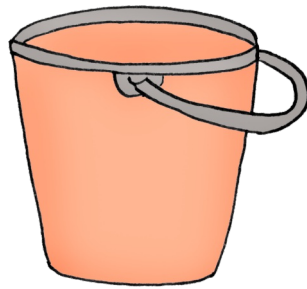


Eier



Eis

Eimer



Meise

weinen

Reiter



Wein

Tanne

Leiter



Reis

eine Meise im Wald

eine Ameise in der  
Erde

ein Schwein im Sand

Wein in der Tasse

Reis im Teller

Wasser in der Dusche

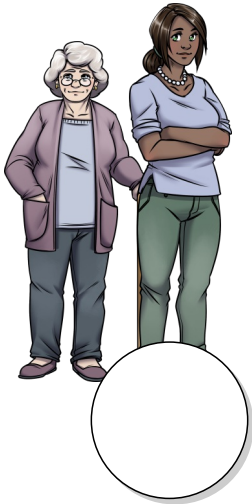
Melone in der Schale

Mensch mit Eis

Schere am Tisch

Eimer an der Leiter

# Welcher Satz gehört zu welchem Bild?

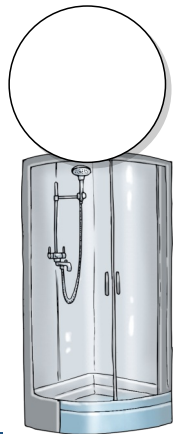


1. Eine Meise ist am Ast im Wald.
2. Eine Ameise und drei Schweine sind im Sand.
3. Meine Oma und deine Tante sind in der Schule.

4. Weil du Melone isst, ist sie am Tisch.
5. Nuss und Melone sind in der Schale.

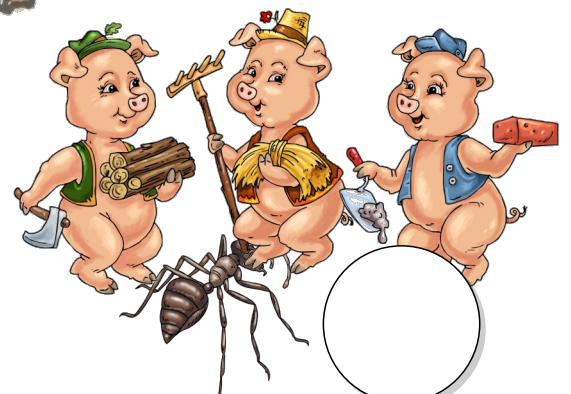
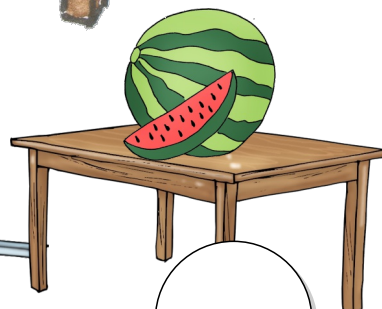
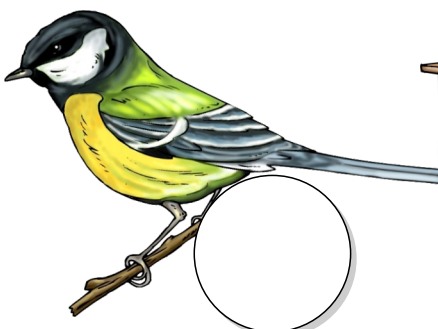
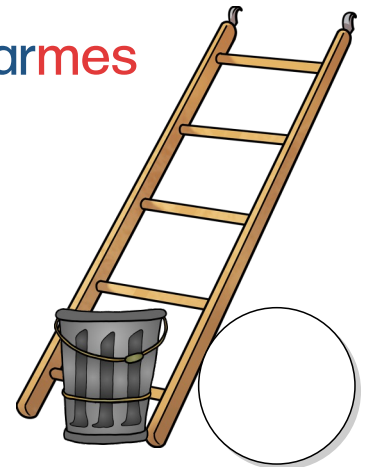
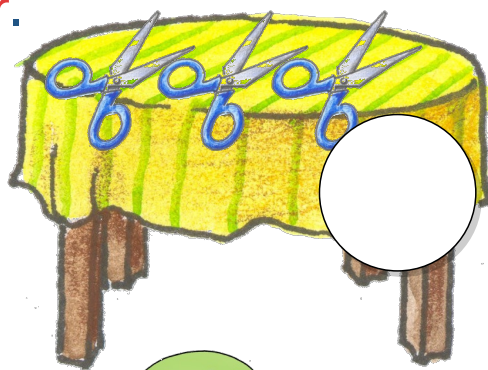
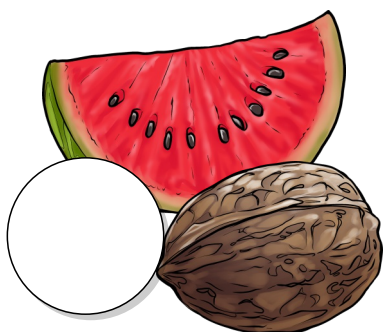


6. Reis und Wein will ich essen.
7. Das Wasser in der Dusche ist warm.



8. Drei Scheren sind am Tisch.

9. Im Eimer an der Leiter ist warmes Wasser.





EINEMEISEISTAMAST

|  |
|--|
|  |
|  |
|  |

MEINEOMAWILLWEIN

|  |
|--|
|  |
|  |
|  |

SEINEMAMAWEINTLEISE

|  |
|--|
|  |
|  |
|  |

DEINETANTEWILLTEE

|  |
|--|
|  |
|  |
|  |

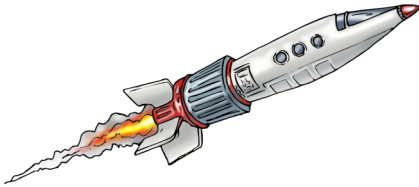
DIEAMEISEWILLINDERERERDESEIN

|  |
|--|
|  |
|  |
|  |

|  |
|--|
|  |
|  |
|  |

ERWILLSCHONINDIESCHULE

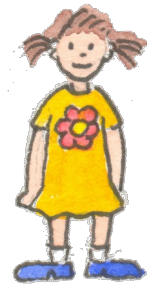
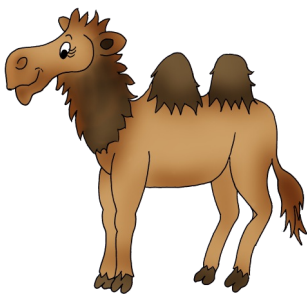
|  |
|--|
|  |
|  |
|  |



|   |   |   |   |   |   |   |   |   |   |   |   |   |
|---|---|---|---|---|---|---|---|---|---|---|---|---|
| K | L | O | K | B | Y | X | Y | C | E | U | Q | X |
| R | P | U | N | M | W | M | F | W | B | I | X | V |
| O | F | M | E | L | X | A | U | Z | K | I | X | C |
| N | L | R | T | H | B | S | F | A | D | D | K | B |
| E | F | M | E | G | B | K | U | N | A | E | P | E |
| Y | F | X | Q | V | U | E | C | K | N | N | R | N |
| D | U | N | K | E | L | H | N | E | K | K | E | K |
| T | D | O | K | T | O | R | M | R | E | E | Q | E |
| J | H | H | H | A | K | F | J | V | G | N | O | L |
| K | R | E | I | S | E | L | C | G | Q | N | Z | Z |
| K | L | O | F | A | N | O | R | A | K | O | L | L |
| X | C | R | U | A | M | I | K | A | D | O | C | I |
| O | O | M | L | Z | R | A | K | E | T | E | U | E |

Diese Wörter findest du im Suchsel: ANKER, RAKETE, KREISEL, MASKE, KNETE, MIKADO, ANORAK, DOKTOR, DANKE, DENKEN, KRONE, DUNKEL, ENKEL, KLO

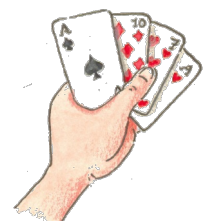
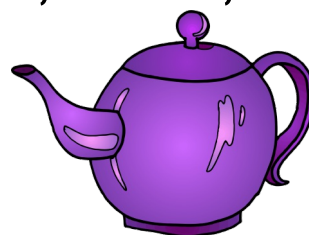
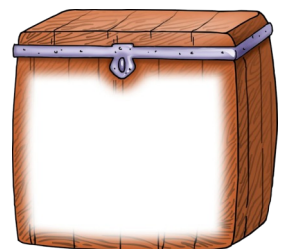
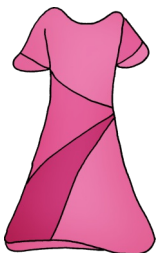


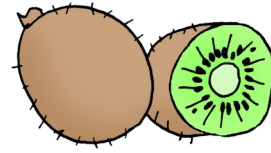


|   |   |   |   |   |   |   |   |   |   |   |   |   |
|---|---|---|---|---|---|---|---|---|---|---|---|---|
| L | O | B | Y | X | Y | C | K | E | U | Q | X | P |
| U | K | A | L | T | M | W | A | F | K | W | B | I |
| X | K | I | N | D | V | F | M | M | E | K | K | L |
| X | U | Z | D | I | X | C | E | K | T | A | I | K |
| L | K | E | H | B | F | K | R | A | T | R | S | A |
| B | A | F | M | G | B | U | A | K | E | T | T | N |
| K | M | Y | F | X | Q | V | E | A | C | E | E | N |
| S | E | Q | N | E | Y | M | F | O | J | H | H | E |
| H | L | A | K | U | J | V | R | O | C | G | F | N |
| Z | Z | F | R | C | K | A | L | E | N | D | E | R |
| L | X | C | K | A | M | M | R | K | I | N | O | K |
| A | K | A | S | S | E | C | I | O | O | M | L | F |
| U | E | G | Q | Q | J | Q | J | K | L | E | I | D |

Diese Wörter findest du im Suchsel:

KAKAO, KALENDER, KALT, KETTE,  
 KAMEL, KINO, KIND, KAMM, KAMERA,  
 KANNE, KARTE, KASSE, KISTE, KLEID

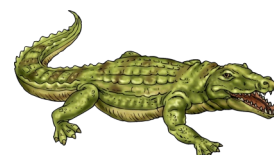
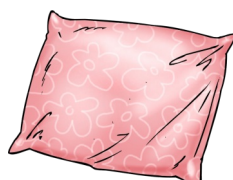
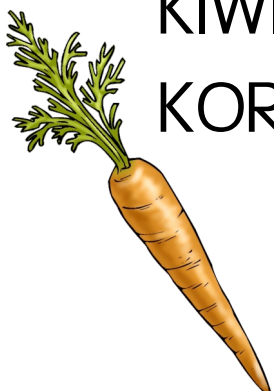




|   |   |   |   |   |   |   |   |   |   |   |   |   |
|---|---|---|---|---|---|---|---|---|---|---|---|---|
| C | E | U | Q | X | M | U | S | I | K | P | U | M |
| L | I | N | K | S | W | F | W | B | R | S | K | I |
| X | V | F | O | N | K | E | L | M | O | E | A | L |
| X | K | U | Z | K | I | X | C | K | K | K | R | L |
| K | A | R | H | B | K | K | S | A | O | U | O | K |
| A | M | F | K | B | E | O | C | T | D | N | T | I |
| K | I | F | M | G | K | A | H | E | I | D | T | W |
| T | N | B | U | P | S | L | R | R | L | E | E | I |
| U | Y | F | X | Q | E | A | A | V | U | C | I | H |
| S | N | E | T | X | F | J | N | H | H | A | A | K |
| F | J | V | T | R | I | N | K | E | N | L | O | C |
| G | K | O | R | A | L | L | E | F | N | Z | Z | F |
| O | W | O | L | K | E | L | K | I | S | S | E | N |



Diese Wörter findest du im Suchsel: KATER,  
 LINKS, MUSIK, SCHRANK, SEKUNDE,  
 TRINKEN, WOLKE, ONKEL, KAROTTE,  
 KIWI, KAKTUS, KISSEN, KEKSE,  
 KORALLE, KROKODIL, KOALA, KAMIN







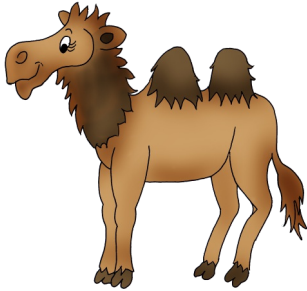
Kamel



Krone



Anorak



Enkel



Kakao

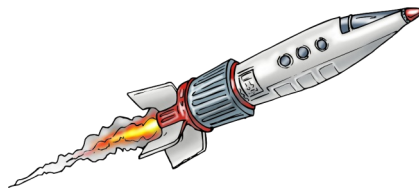
Kalender



dunkel



Kind



Anker

Kamm



Anker

Rakete



Klo



Kleid

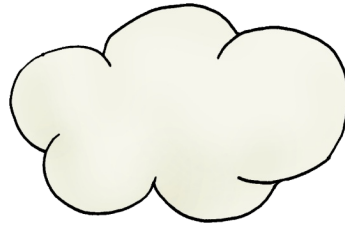


Doktor



Musik

Wolke



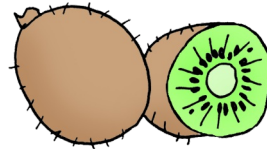
Kamera

Kiste

trinken



Schrank

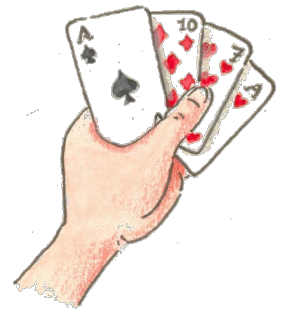
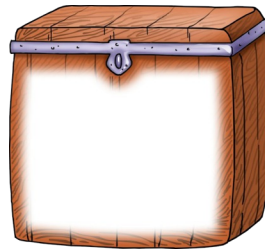


Karten

Kanne

Kater

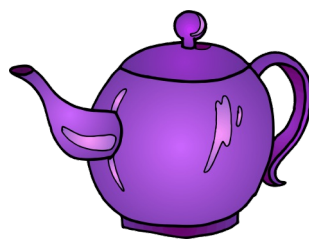
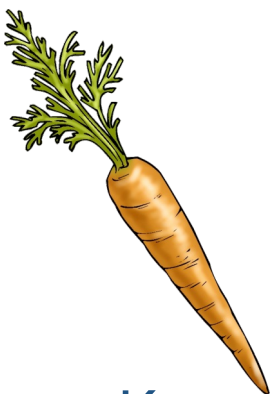
Kiwi



Keks

Krokodil

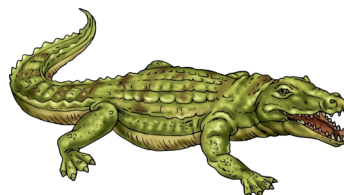
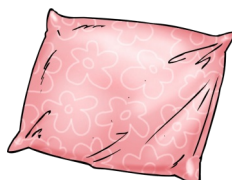
Koralle



Kissen

Karotte

Kaktus



Koala



- Kakao
- Kamm
- Karla



- Kind
- klein
- Enkel

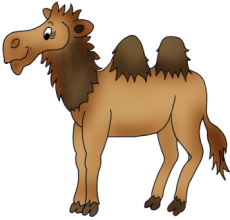
- Kilo
- Kelle
- Kalender



- Kerle
- Kette
- Kater



- Kamm
- Karma
- Kamel

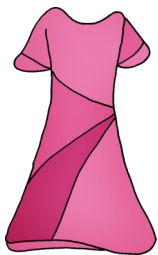


- kommen
- kennen
- Krone

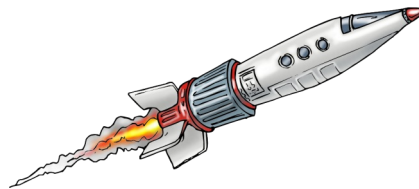
- Amme
- Anker
- Allee



- Doktor
- Dotter
- Donner



- Kelle
- Kleid
- kein



- rasen
- Rakete
- Raser

- Kanne
- Kamm
- kann



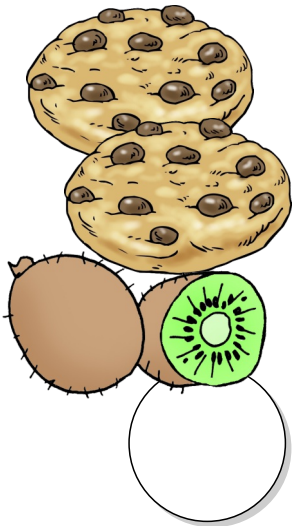
- Lolo
- Klo
- Koller



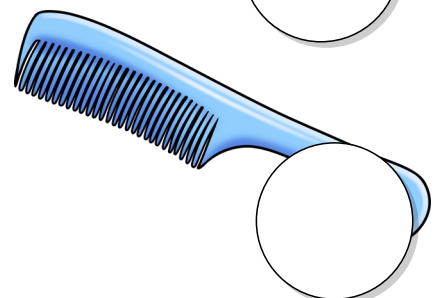
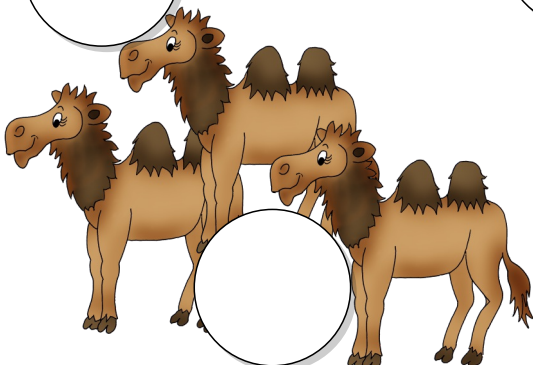
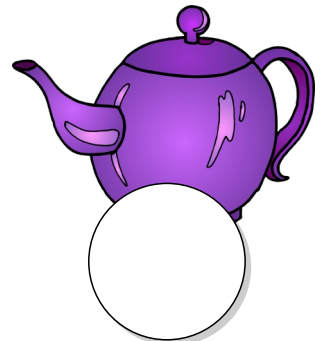
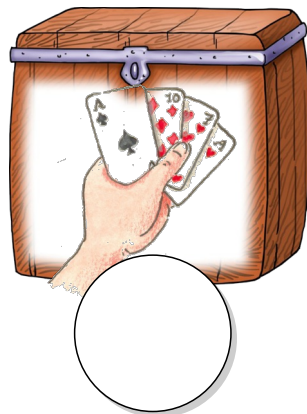
# Welcher Satz gehört zu welchem Bild?



1. In der Tasse ist Kakao oder Tee.
2. Das Krokodil will Kiwi und Kekse.
3. Der Koala will einen Kaktus.
4. Das Kind will einen Doktor.
5. Das Kind will ein tolles Kleid.



6. Drei Kamele wollen Wasser.
7. Mamas will keinen Kamm.
8. Das Krokodil ist im Klo.
9. Tante Karin will eine Kanne Tee.
10. In der Kiste sind Karten.

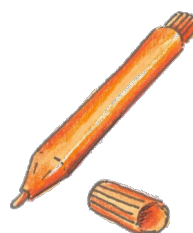






|   |   |   |   |   |   |   |   |   |   |   |   |   |
|---|---|---|---|---|---|---|---|---|---|---|---|---|
| F | F | L | R | O | B | Y | X | Y | C | D | E | U |
| Q | X | P | U | U | M | L | O | C | K | E | W | F |
| T | R | O | C | K | E | N | W | B | I | C | X | V |
| Q | M | L | K | X | Q | Z | D | D | K | K | I | X |
| C | G | W | S | J | H | B | I | E | F | E | K | B |
| N | F | E | A | M | G | B | C | C | U | L | P | Y |
| I | F | C | C | R | X | Q | K | K | V | U | C | R |
| C | H | K | K | O | N | E | T | E | M | F | J | H |
| K | H | E | Q | C | A | K | F | J | V | L | O | C |
| E | G | R | F | K | N | Z | D | R | E | C | K | Z |
| N | F | O | L | L | X | C | S | O | C | K | E | R |
| U | A | C | S | C | H | N | E | C | K | E | I | O |
| O | M | L | Z | U | E | S | C | H | M | U | C | K |

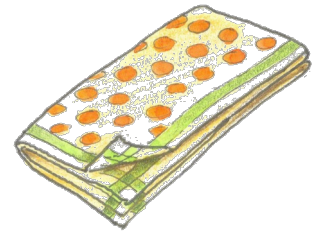
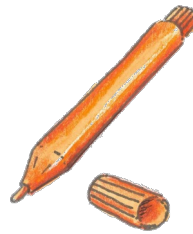
Diese Wörter findest du im Suchsel: DECKE,  
DRECK, LOCKE, ROCK, RUCKSACK,  
SCHNECKE, SOCKE, TROCKEN, DICK,  
WECKER, DECKEL, SCHMUCK, NICKEN



Rucksack



Rock



Locken



Ecke

Dreck



Socken

Schmuck



trocken

Deckel

dick

Wecker



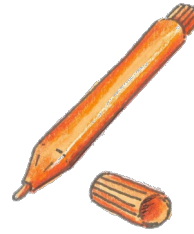
Schnecke

Deckel





- Dreck
- Deckel
- Dackel



- Dackel
- Deckel
- Decke

- Rad
- Reiter
- Rock



- Kette
- Schmuck
- Kater



- Rock
- Rucksack
- Ricke



- Ecke
- Erker
- Erle

- Laken
- Locken
- lecken



- dick
- dumm
- rot



- Sack
- Schnecke
- Socken



- schick
- Schnecke
- Schmuck

- Welle
- Wolle
- Wecker



- Deckel
- Decke
- Dackel





# Welcher Satz gehört zu welchem Bild?

1. Im Wasser ist Dreck.
2. Der Deckel ist an der Kiste.
3. Rock und Krone sind toll.
4. Eine Kette ist ein Schmuck.
5. Der dicke Mann mag Kekse.
6. Socken und Mantel sind warm.
7. Leo ist unter der Decke.
8. Im Rucksack ist eine Schere.
9. Unter der Krone sind Locken.
10. In der Dusche ist es trocken.

